

200 & 211-2411 DOLLARTON HIGHWAY, NORTH VANCOUVER
CORNER UNIT WITH FIVE OFFICES, AND A LARGE BOARDROOM

**FOR
SALE**



WILLIAM | WRIGHT

SAM REPCHUK
sam@williamwright.ca
604.546.5555

MARIANNE DECOTIIS
PERSONAL REAL ESTATE CORPORATION
marianne@williamwright.ca
236.425.1617





OVERVIEW

William Wright Commercial is excited to present this beautiful corner unit located on the second floor of Maplewood Landing, just off Dollarton Highway. The office features high-end finishes such as a spacious reception area, etched glass accents, five large offices, and a large boardroom. The building was constructed in 2008, the space is in excellent condition and ready for owner occupancy December 2024.

PROPERTY HIGHLIGHTS



Corner unit



7 Parking Stalls



Well finished offices



HVAC

SALIENT FACTS

SIZE

+/- 2,454 SQFT

PARKING

7 Stalls

ZONING

CD - 50

PROPERTY TAXES

\$10,760.35

PID

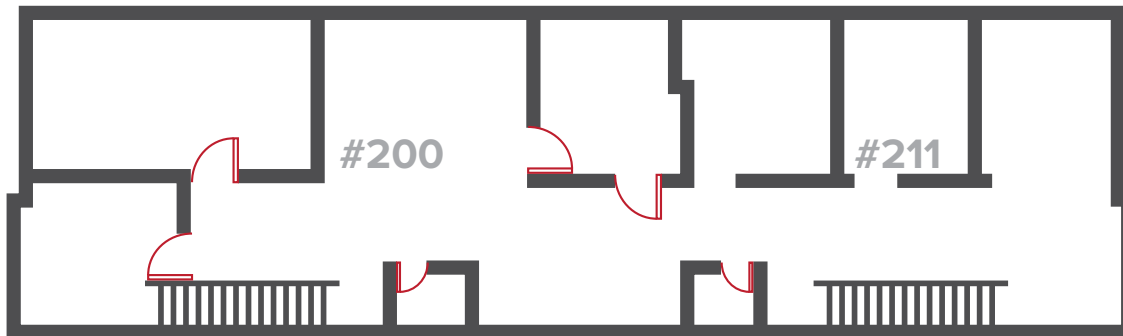
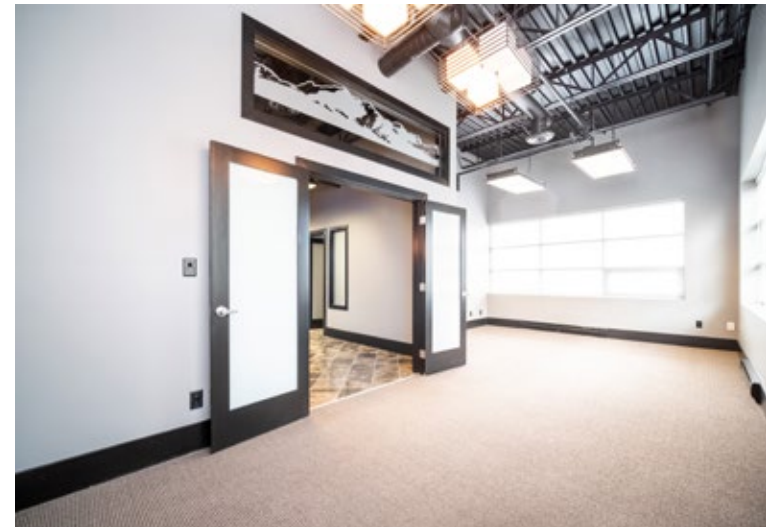
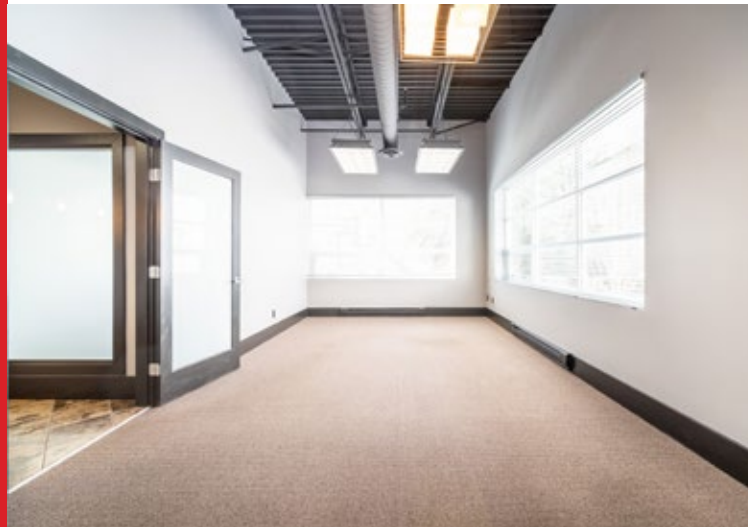
027-742-083 & 027-742-105

LEGAL DESCRIPTION

STRATA LOT 14, PLAN BCS3223, DISTRICT LOT 611, GROUP 1, NEW WESTMINSTER LAND DISTRICT, TOGETHER WITH AN INTEREST IN THE COMMON PROPERTY IN WPROPORTION TO THE UNIT ENTITLEMENT OF THE STRATA LOT AS SHOWN ON FORM V

PRICE

\$1,695,000.00





SUBJECT PROPERTY DISTANCES	
HIGHWAY 1	11 MIN DRIVE
SEABUS	15 MIN DRIVE
DOWNTOWN VANCOUVER	22 MIN DRIVE
YVR AIRPORT	54 MIN DRIVE

LOCATION

Maplewood Landing is situated to the south of Dollarton Highway, providing an optimal location for easy access to Burnaby and Vancouver via HWY 1 and the Second Narrows Bridge. Its strategic location offers a prime opportunity for those who seek a convenient way to commute between these areas and beyond.

FOR MORE INFORMATION CONTACT

SAM REPCHUK
 sam@williamwright.ca
 604.546.5555

MARIANNE DECOTIIS
 PERSONAL REAL ESTATE CORPORATION
 marianne@williamwright.ca
 236.425.1617