

6640 VEDDER ROAD, CHILLIWACK
RETAIL & OFFICE SPACE AT VEDDER POINTE

**FOR
LEASE**



WILLIAM | WRIGHT

Commercial Real Estate Services

CHRIS VAN VLIET
PERSONAL REAL ESTATE CORPORATION
chris@williamwright.ca
604.546.5555



AVAILABILITY

	UNIT	SIZE SF
BUILDING A	210A	1,971
	220A	3,013
BUILDING J	J2	1,574
	J3	2,137



High exposure retail units available from 1,574 to 3,711 SF



Fully built out offices from 1,971 to 3,013 SF



Access, signage and exposure on Vedder Road



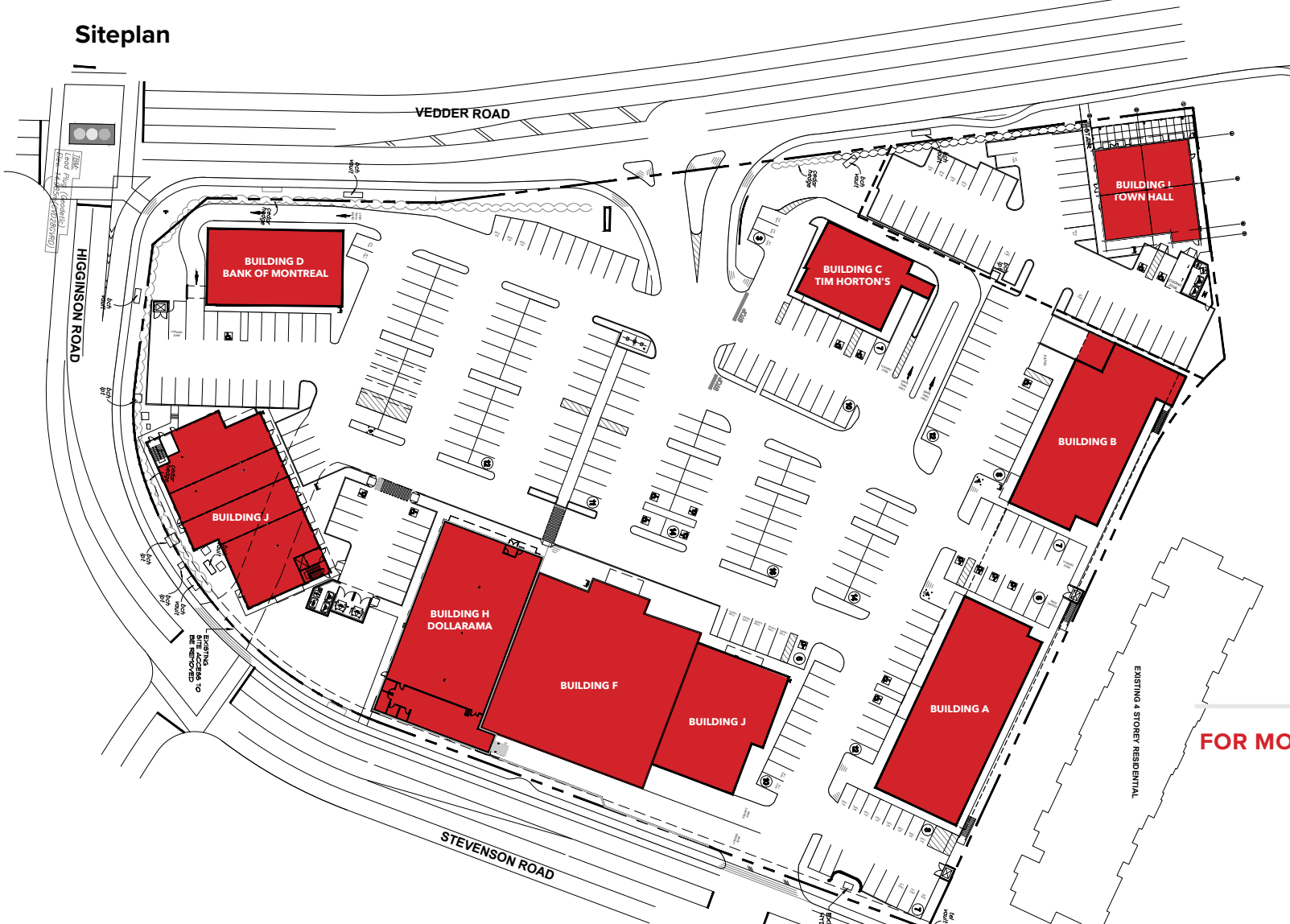
Ample parking

6640 VEDDER ROAD, CHILLIWACK

RETAIL & OFFICE SPACE AT VEDDER POINTE

FOR LEASE

Siteplan



FOR MORE INFORMATION CONTACT

CHRIS VAN VLIET*

*PERSONAL REAL ESTATE CORPORATION

chris@williamwright.ca

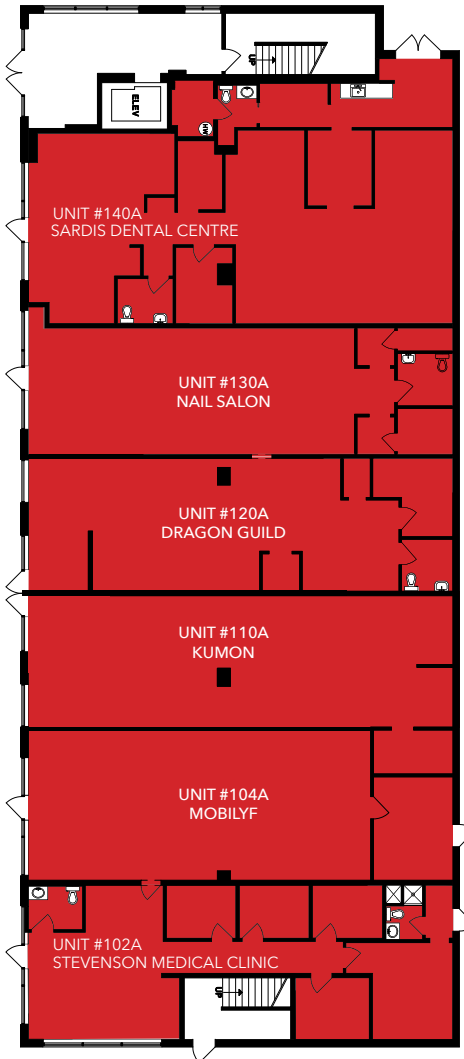
604.546.5555

6640 VEDDER ROAD, CHILLIWACK

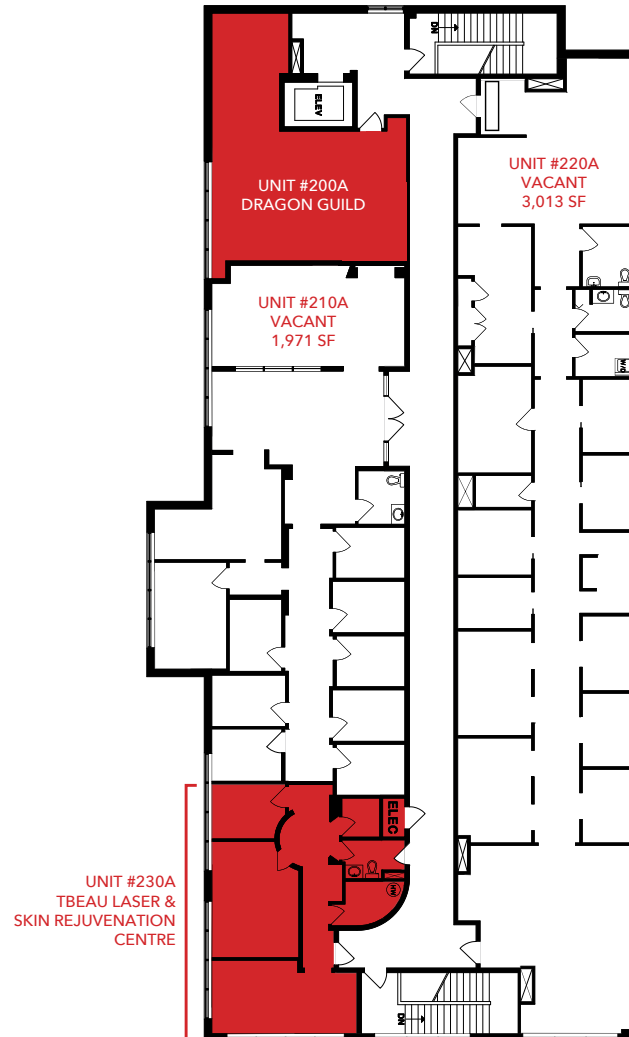
RETAIL & OFFICE SPACE AT VEDDER POINTE

**FOR
LEASE**

Main



Second



BUILDING A

UNIT	SIZE SF
210A	1,971
220A	3,013

FOR MORE INFORMATION CONTACT

CHRIS VAN VLIET*

*PERSONAL REAL ESTATE CORPORATION

chris@williamwright.ca

604.546.5555

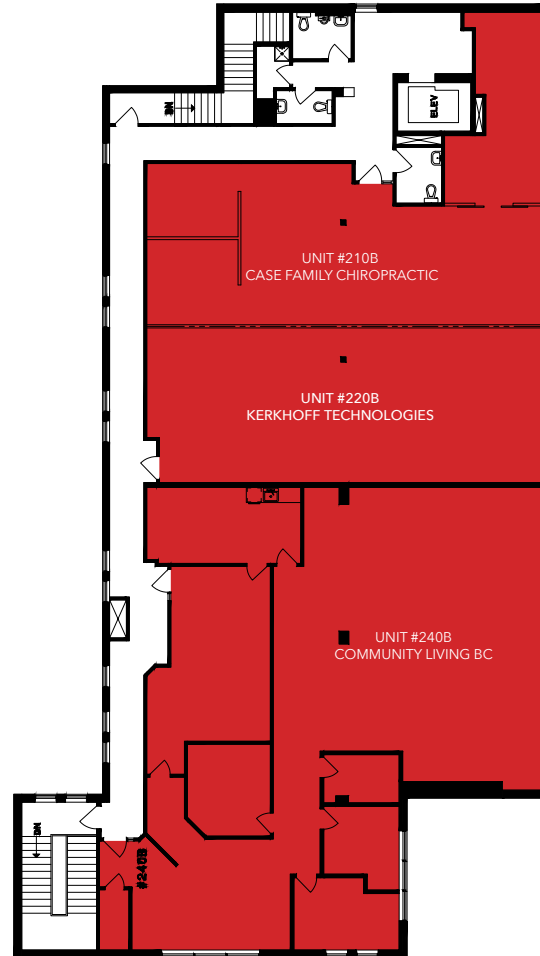
6640 VEDDER ROAD, CHILLIWACK

RETAIL & OFFICE SPACE AT VEDDER POINTE

**FOR
LEASE**

Main

Second



BUILDING B

UNIT	SIZE SF
------	---------

FULLY LEASED

FOR MORE INFORMATION CONTACT

CHRIS VAN VLIET*

*PERSONAL REAL ESTATE CORPORATION

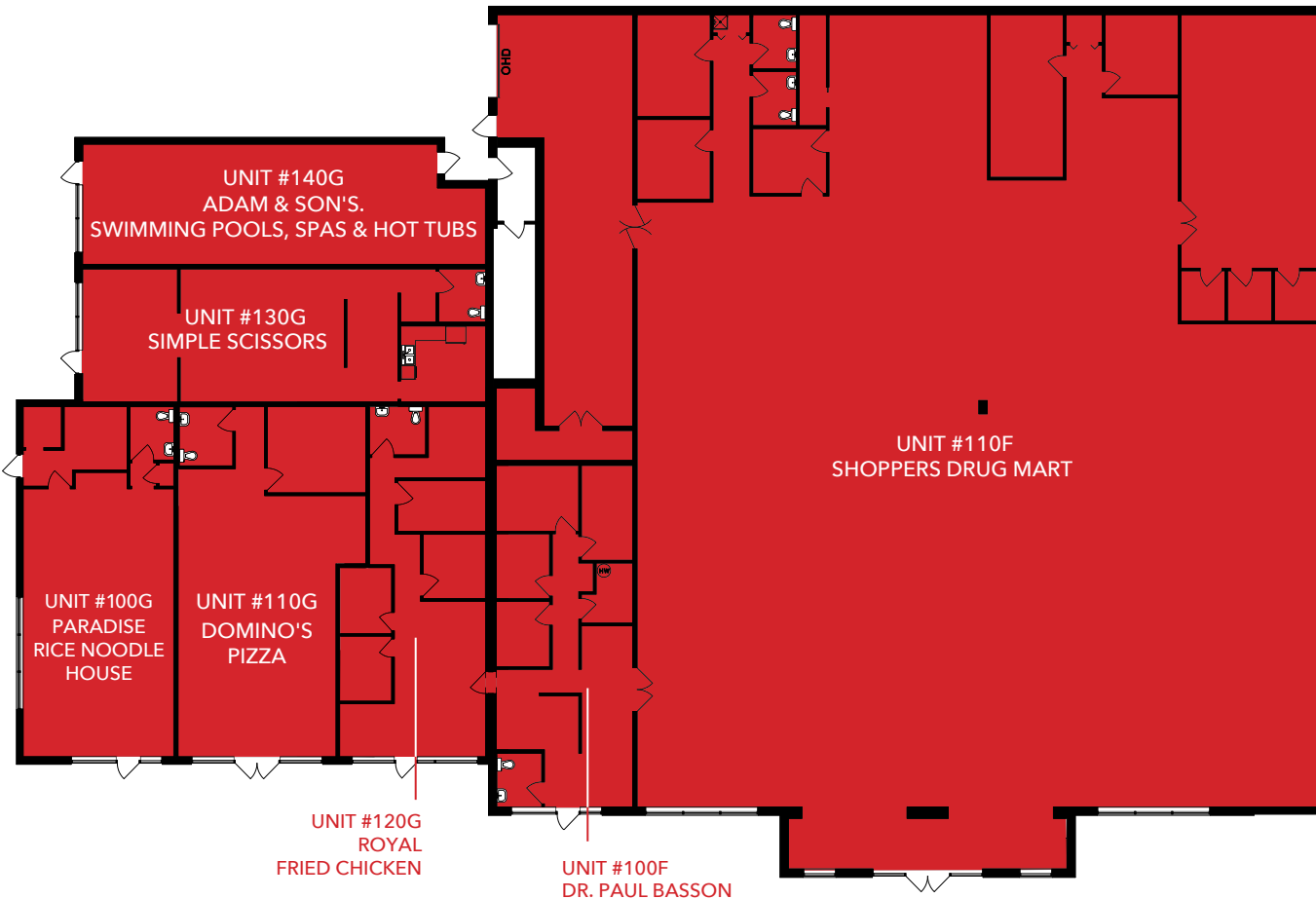
chris@williamwright.ca

604.546.5555

6640 VEDDER ROAD, CHILLIWACK

RETAIL & OFFICE SPACE AT VEDDER POINTE

**FOR
LEASE**



BUILDING G AND F

UNIT	SIZE SF
------	---------

FULLY LEASED

FOR MORE INFORMATION CONTACT

CHRIS VAN VLIET*

*PERSONAL REAL ESTATE CORPORATION

chris@williamwright.ca

604.546.5555

6640 VEDDER ROAD, CHILLIWACK

RETAIL & OFFICE SPACE AT VEDDER POINTE

FOR LEASE



BUILDING J

UNIT	SIZE SF
J2	1,574
J3	2,137

FOR MORE INFORMATION CONTACT

CHRIS VAN VLIET*

*PERSONAL REAL ESTATE CORPORATION

chris@williamwright.ca

604.546.5555



williamwright.ca



Vancouver Office
1340-605 Robson Street
Vancouver, BC
604.428.5255

New Westminster Office
350-522 7th Street
New Westminster, BC
604.545.0636

Fraser Valley Office
210-8029 199th Street
Langley, BC
604.546.5555

Victoria Office
843 Johnson Street
Victoria, BC
250.590.5797

Central Island Office
100B-154 Memorial Avenue
Parksville, BC
250.586.1226

Kelowna Office
205-478 Bernard Avenue
Kelowna, BC
236.420.3558

Kamloops Office
406-121 5th Avenue
Kamloops, BC
236.425.1617