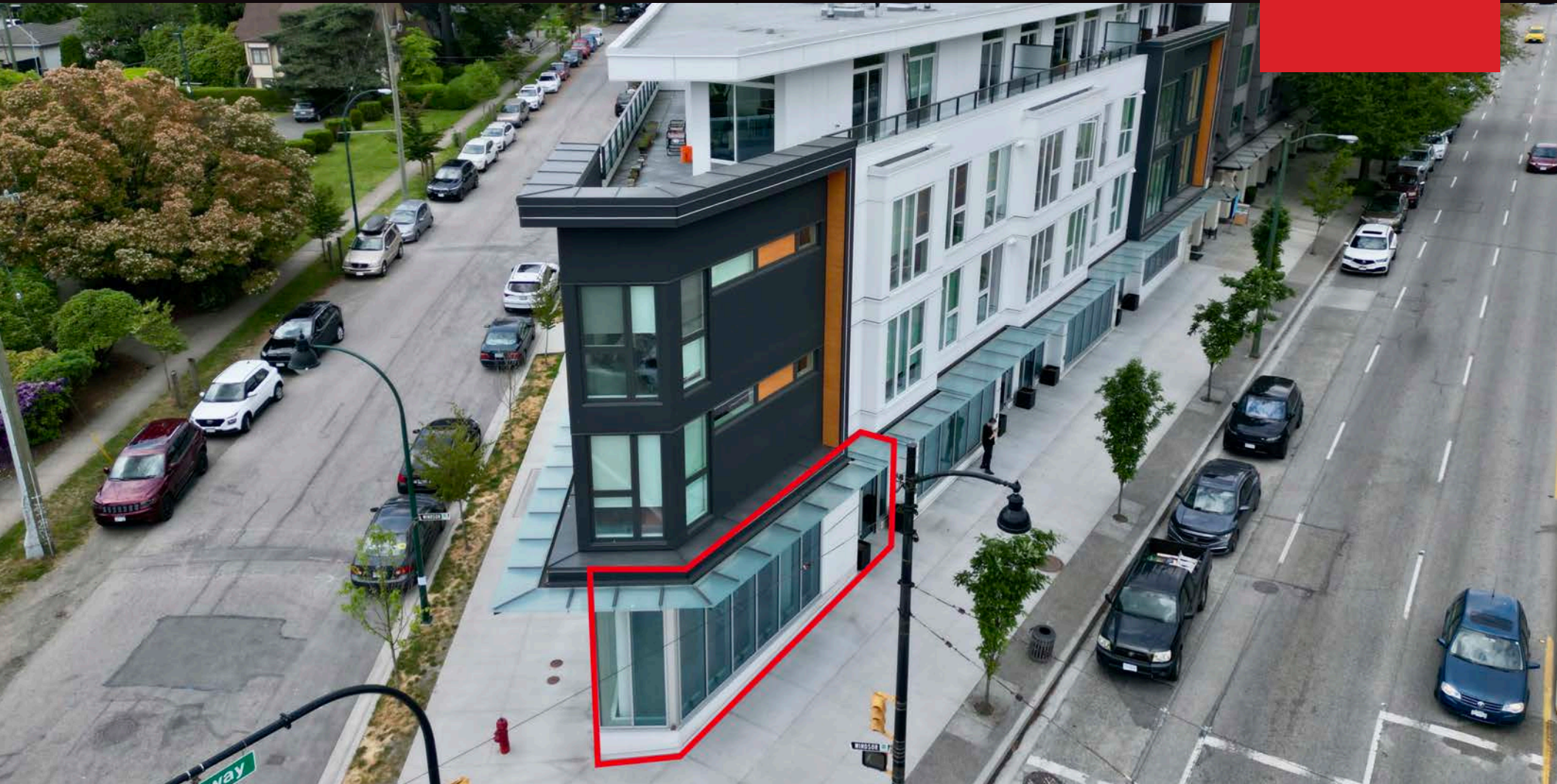


990 KINGSWAY, VANCOUVER

HIGH EXPOSURE CORNER UNIT

FOR
SALE

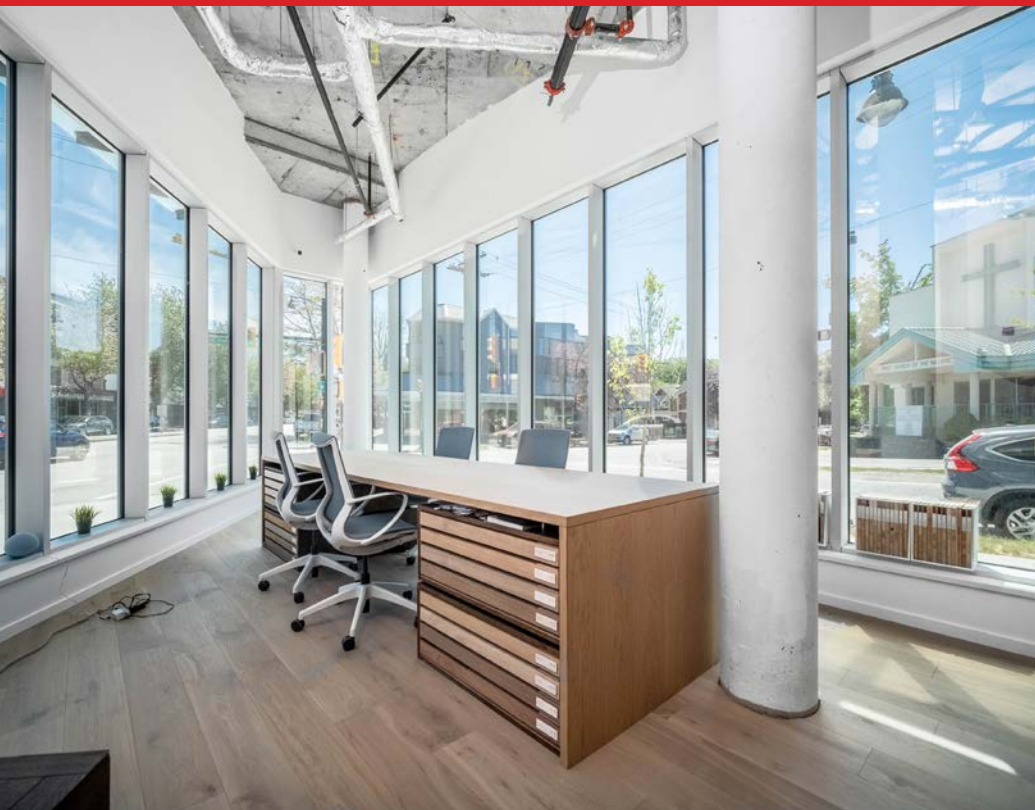


WILLIAM | WRIGHT

Commercial Real Estate Services

NATHAN ARMOUR
PERSONAL REAL ESTATE CORPORATION
nathan@williamwright.ca
604.545.0636

JOSH JAWANDA
josh@williamwright.ca
604.545.0636



PRIME RETAIL INVESTMENT OPPORTUNITY

William Wright is pleased to present a prime retail investment with exceptional corner exposure located at 990 Kingsway. This property offers an excellent opportunity for investors seeking a high-visibility location with a bustling commercial atmosphere. With its strategic positioning and attractive features, this unit is an ideal choice for retail ventures aiming to establish a strong presence in one of Vancouver's most sought-after areas.



High Exposure Corner Unit



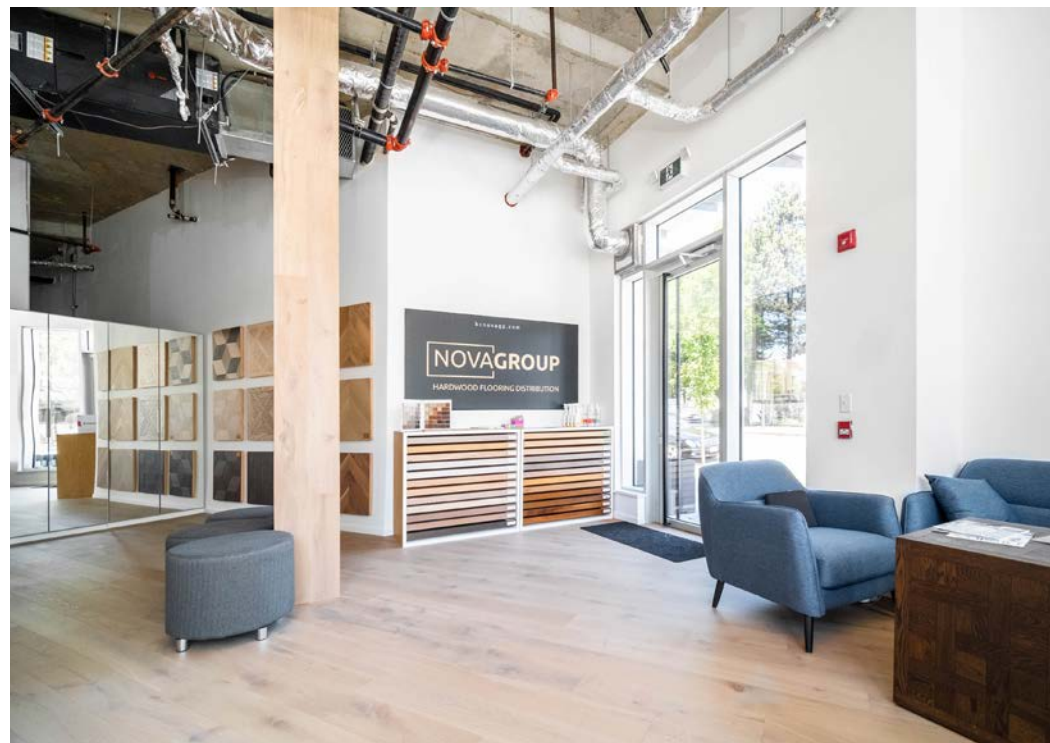
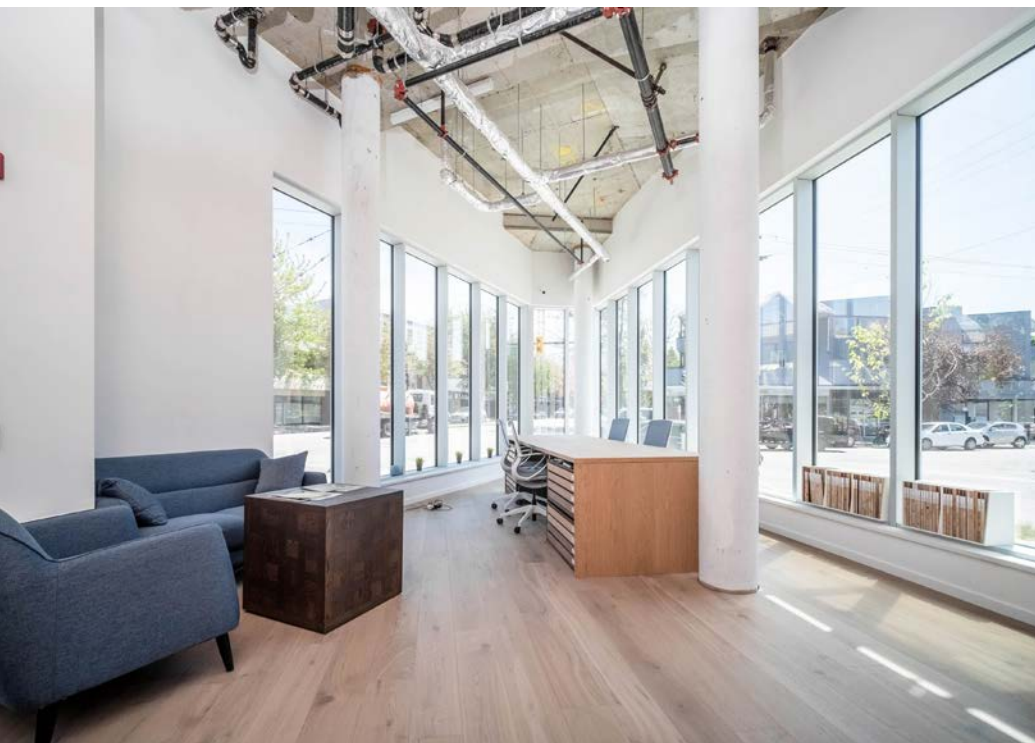
Modern Infrastructure



Floor to ceiling glazing



Investment Opportunity



SALIENT FACTS

SIZE

+/- 1,042 SQFT

PARKING

1

ZONING

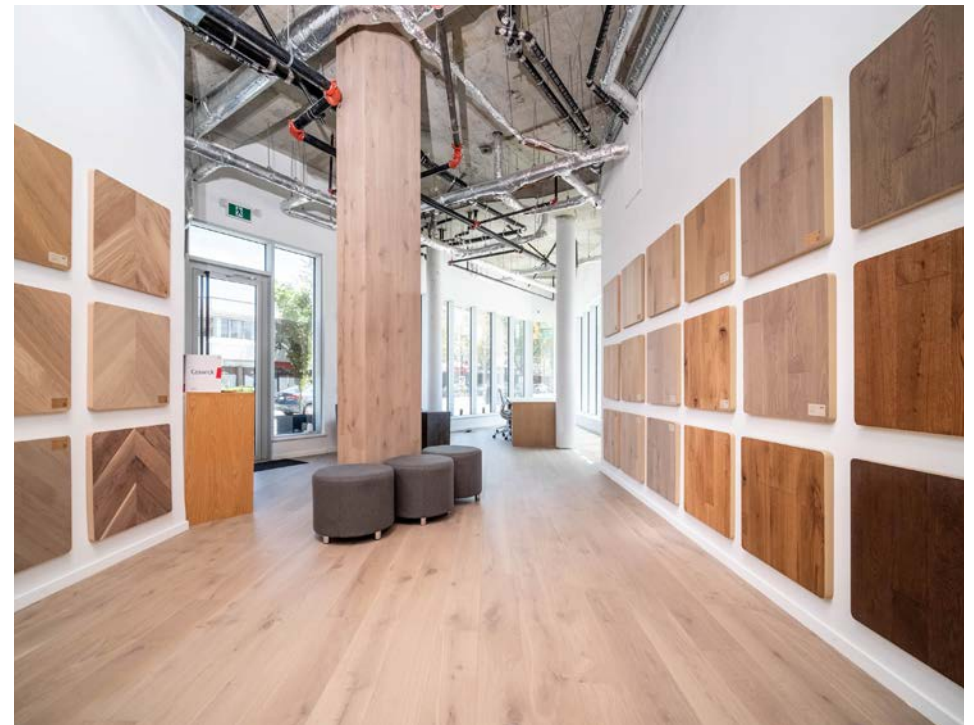
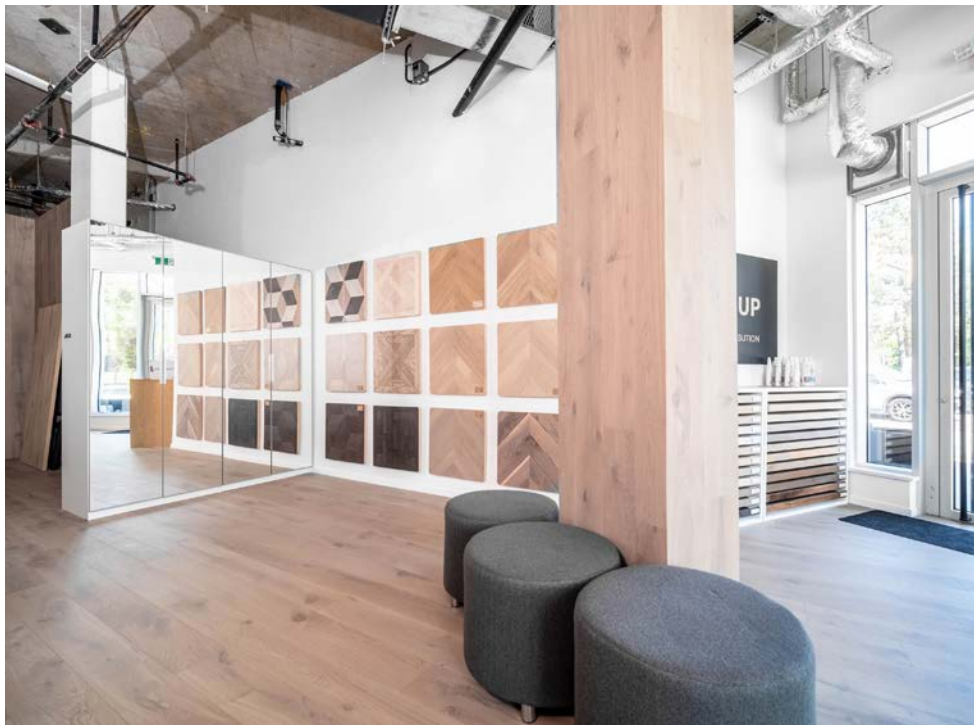
C-2

STRATA FEES

366.96

PRICE

\$1,298,000.00





FOR MORE INFORMATION CONTACT

NATHAN ARMOUR

PERSONAL REAL ESTATE CORPORATION

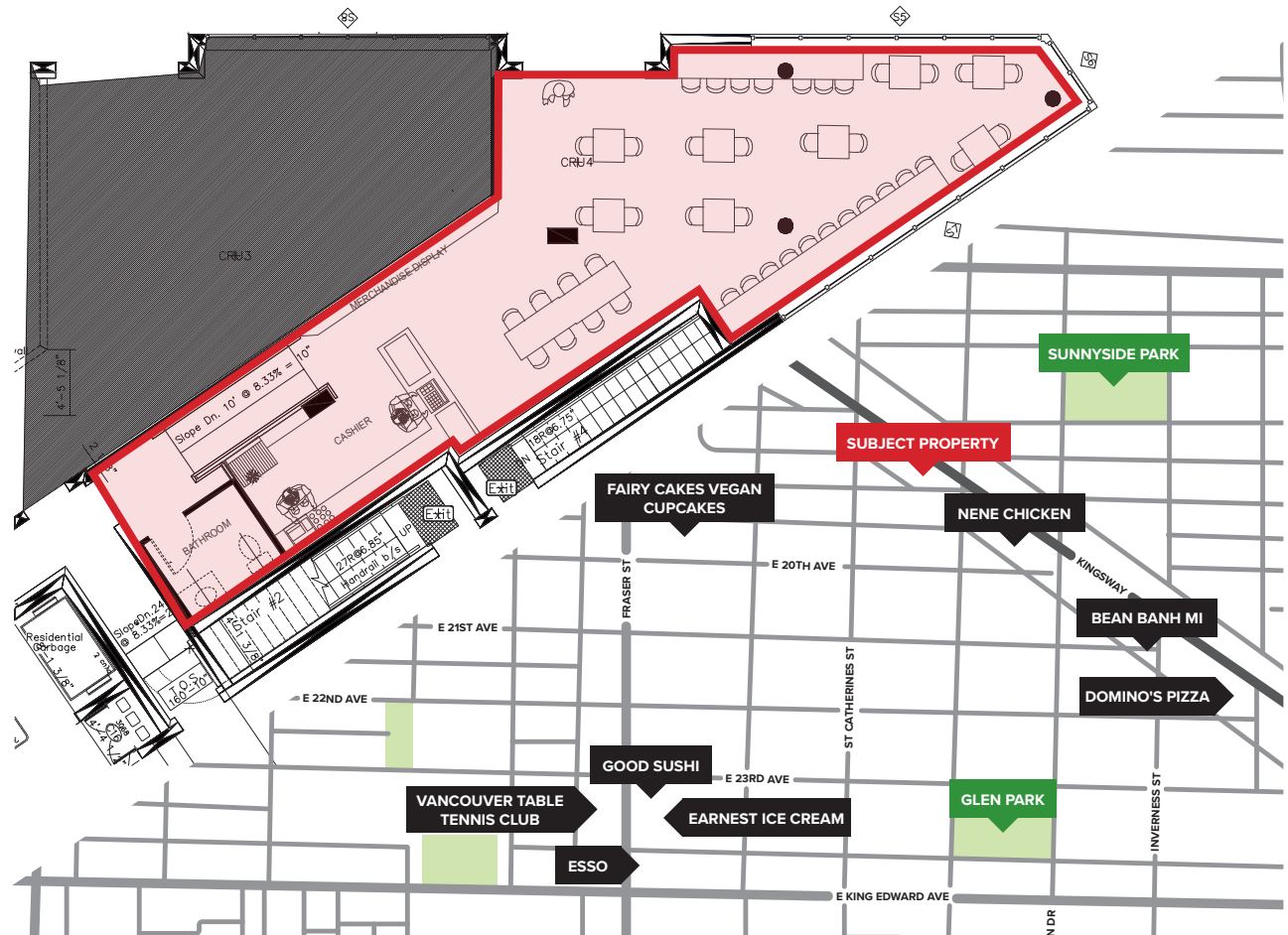
nathan@williamwright.ca

604.545.0636

JOSH JAWANDA

josh@williamwright.ca

604.545.0636



**The Proposed Space Plan is conceptual only, the Property will be delivered in shell condition.*

LOCATION

The property is situated on the corner of Kingsway and Windsor Street within 1km of Mount Saint Joseph Hospital. This community is evolving as a prominent hub in the city, with a number of development applications moving forward on this corridor. Being on the cusp of the Mount Pleasant community, this unit allows great access to Downtown Vancouver, Burnaby, and Richmond.