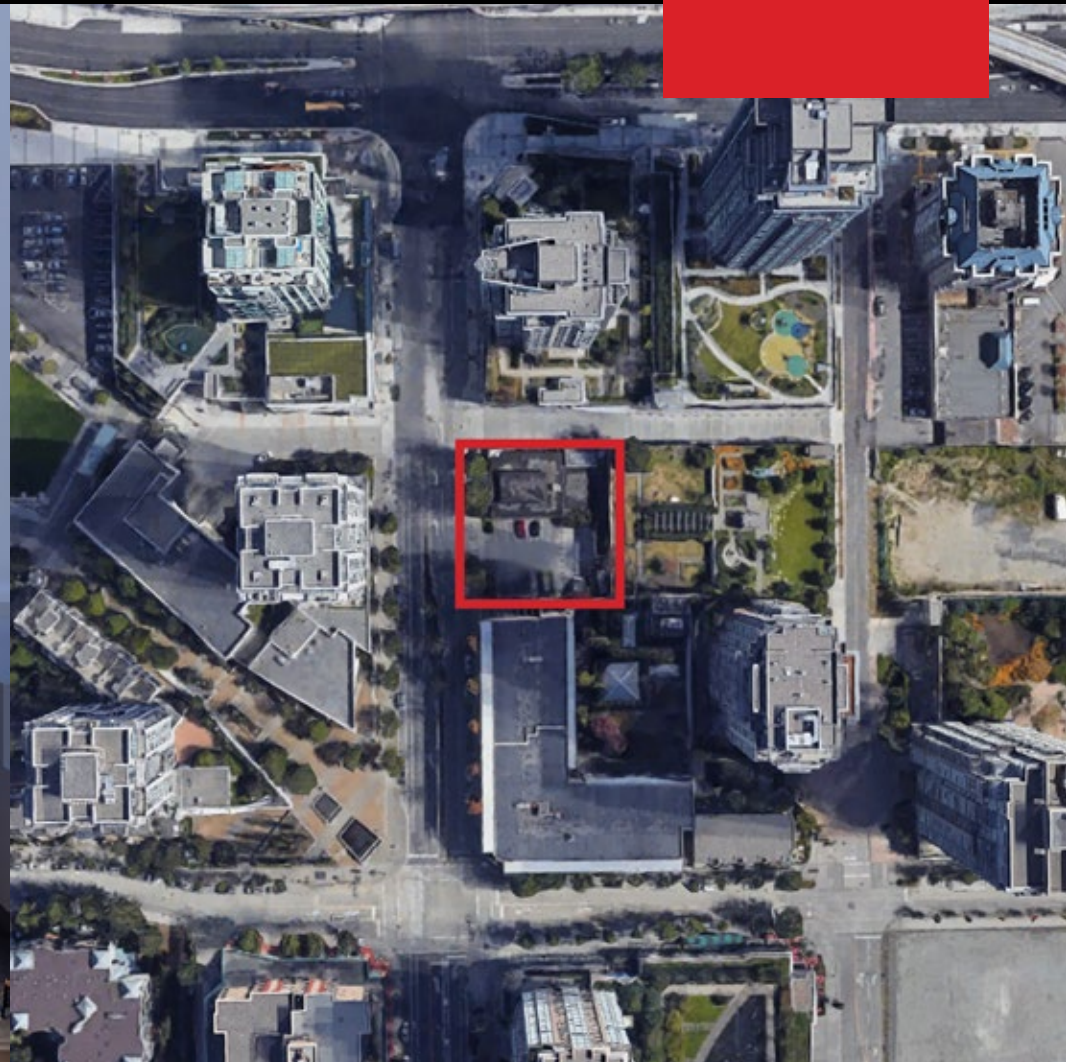


SL3 - 2992 GLEN DRIVE, COQUITLAM
BRAND NEW CLASS "A" OFFICE SPACE AT DIAGRAM

**FOR
SALE**



WILLIAM | WRIGHT

Commercial Real Estate Services

MARK NEMISH
mark@williamwright.ca
604.428.5255

diagram

BY CRESSEY

UNIT SL3 SIZE

+/- 1,700 SQFT

PARKING

2 Stalls

SALE TYPE

Assignment

ESTIMATED COMPLETION

Q1-2 2024

PRICE

Contact Listing Agent

HIGHLIGHTS



Brand New Construction



Class "A" Office with
Rooftop Amenities



End of Trip Facilities with
Secure Bike Storage



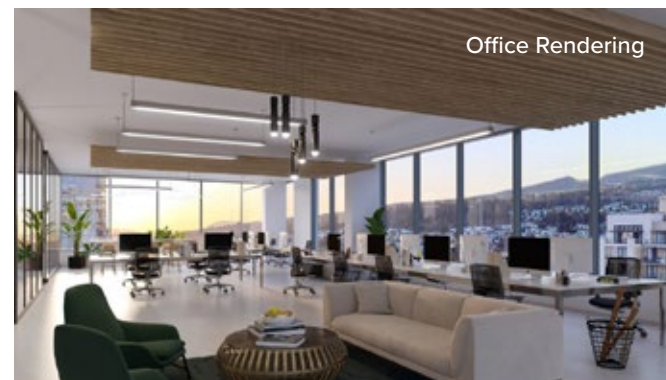
25 Visitor Parking Stalls

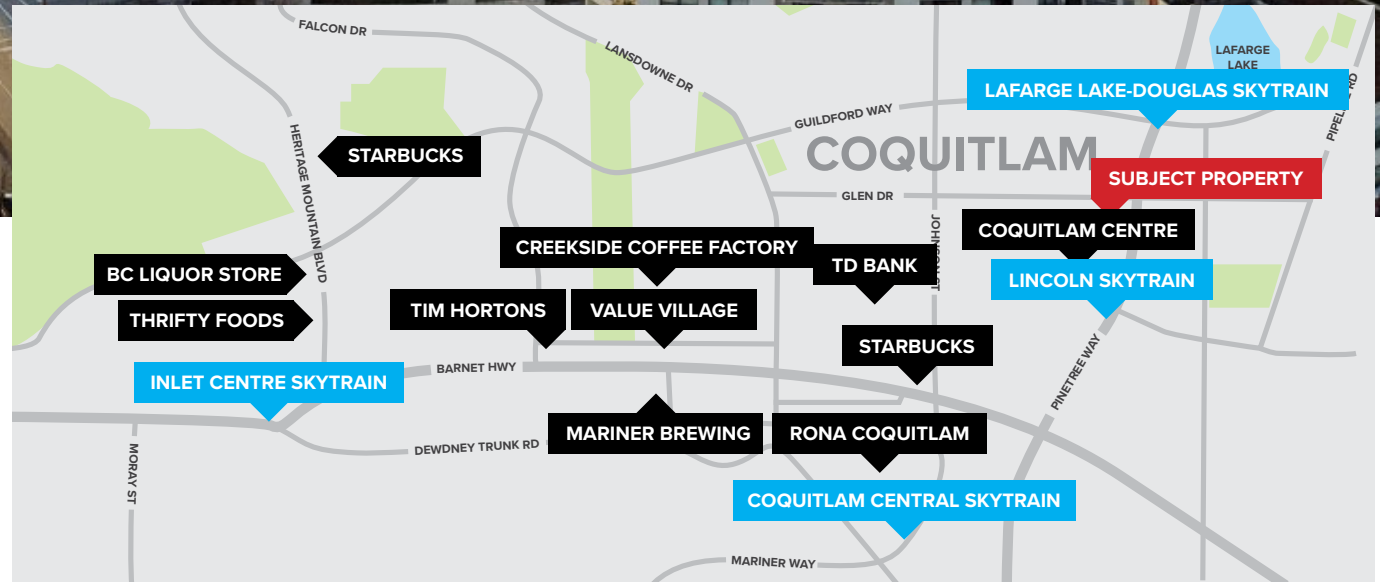
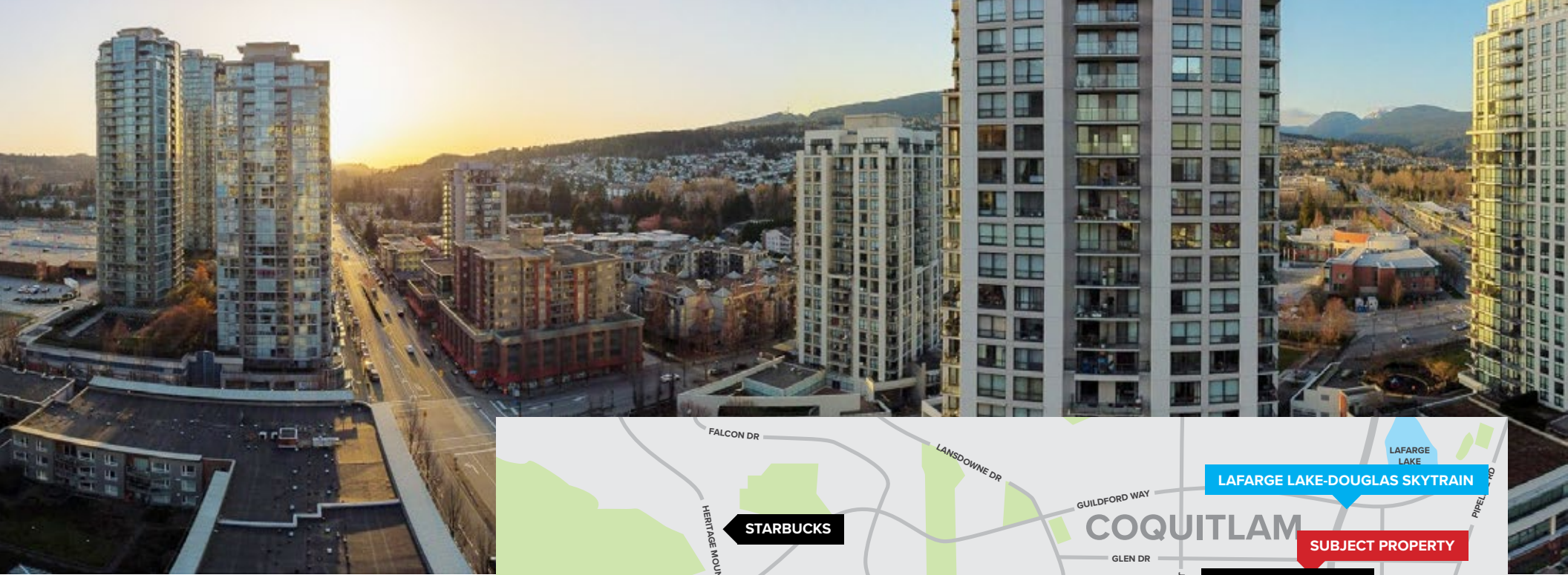


2992 GLEN DRIVE, COQUITLAM

William Wright Commercial is please to present the only ground level unit available for assignment in the amazing Diagram Building developed by Cressey. This unit is highly sought after with the prime location, corner unit and high exposure. This centrally location building is in heart of one of Coquitlam's busiest areas with local amenities, high walk score and thousands of cars passing daily.

The property is designed by Rositch Hemphill Architects and built by Cressey, Diagram offers business owners the opportunity to purchase strata office space in an architecturally stunning, 15-storey office tower with Retail on Grade. With customizable interiors and flexible layouts, Diagram brings a unique opportunity to create a space specifically designed for your business. Diagram consists of 77,976 square feet, with 55 strata office units and three retail units at grade. There will be 145 parking stalls.





LOCATION

Situated along the vibrant Glen Drive, steps to Pinetree Way and just north of Coquitlam Centre, Diagram is located at the centre of Coquitlam's commercial hub. Employees will enjoy and benefit from great shopping, convenient transit access, and a diversified landscape – within minutes you can find yourself surrounded by an abundance of shops, services, boutiques and restaurants, or taking a stroll through Glen Park.

FOR MORE INFORMATION CONTACT

MARK NEMISH
mark@williamwright.ca
 604.428.5255



williamwright.ca



Vancouver Office
430-605 Robson Street
Vancouver, BC
604.428.5255

New Westminster Office
350-522 7th Street
New Westminster, BC
604.545.0636

Fraser Valley Office
210-8029 199th Street
Langley, BC
604.546.5555

Victoria Office
843 Johnson Street
Victoria, BC
250.590.5797

Kelowna Office
205-478 Bernard Avenue
Kelowna, BC
236.420.3558

Property Management Office
200-808 W Hastings Street
Vancouver, BC
604.330.8295