

213 CAYER ST, 1721 HIE AVE, 1723 HIE AVE, COQUITLAM
NEW DEVELOPMENT

**FOR
SALE**



WILLIAM | WRIGHT

Commercial Real Estate Services

MARK NEMISH

mark@williamwright.ca

604.428.5255

BIKRAM SINGH

bikram@williamwright.ca

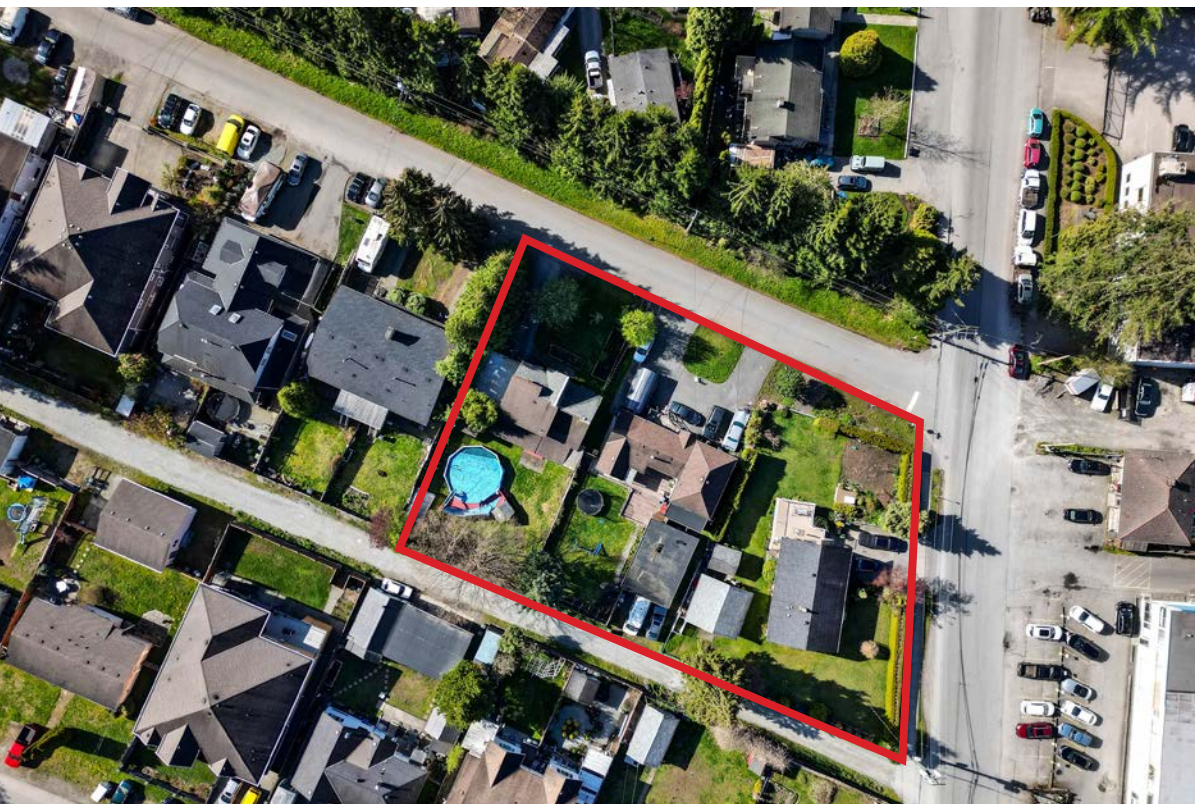
604.545.0636



Residential Development Site Opportunity in Maillardville, Coquitlam

Civic Address'	213 Cayer Street, 1721 Hie Avenue, 1723 Hie Avenue
Neighbourhood	Coquitlam
PID's	213 Cayer Street - 009-339-337 1721 Hie Avenue - 001-520-334 1723 Hie Avenue - 009-339-345
Lot Size	± 26,948 SQFT
Zoning	RM-3
Area Plan	Maillardville Plan
Proposed Land Use	Up to 8 storey residential development
FSR	2.4
Price	Contact listing agents

NEW DEVELOPMENT. The property is located in the Maillardville area of Coquitlam, BC, with a lot size of 26,948 square feet. The area is a highly sought-after residential neighbourhood, offering a convenient location, excellent amenities, easy access to public transportation and great access to Highway 1. This property allows up to an 8 story residential development in this growing area. The development is an attractive investment opportunity, offering a high-quality residential development in a sought-after location. The Maillardville area of Coquitlam is a rapidly growing neighbourhood, with strong demand for high-quality residential properties. Residential development in Maillardville, Coquitlam, is an exciting opportunity to create a high-quality residential property in a sought-after location.



Transit Oriented

There are a number of busses that run through Maillardville that will take you directly to skytrain stations, schools, Lougheed Station, and/or Coquitlam Station. Busses run both north/south as well as west/east, making this one of the more accessible areas by bus in Coquitlam. Because it is one of the furthest cities west, it is also a shorter transit time to working cities such as Vancouver. The nearest SkyTrain station is Braid Station, which will take you through to Burnaby, New Westminster, Coquitlam, Port Moody, and various locations throughout Metro Vancouver.

Location

Maillardville is an area on the southwest side of Coquitlam, with easy access to the highway, buses, and entertainment. This area of Coquitlam's consists of townhouses, detached homes, condo's, and commercial zones with build dates from old to new. It is close by to entertainment (movie theatre), playgrounds & parks, as well as a variety

of restaurants, so you'll never be short of something to do! The central area of the neighbourhood is Mackin Park and the Place Des Arts (school of art) which teaches a variety of after-school activities such as dance, piano, and various arts and crafts for the young and the old.

For More Information Contact

MARK NEMISH
mark@williamwright.ca
604.428.5255

BIKRAM SINGH
bikram@williamwright.ca
604.545.0636

