

#111 8166 128 STREET, SURREY
RETAIL SPACE AT PAYAL BUSINESS CENTRE

**FOR
SALE**



WILLIAM | WRIGHT

AMAN KUNDI
PERSONAL REAL ESTATE CORPORATION
aman.kundi@williamwright.ca
604.428.5255



OVERVIEW

Here is a rare opportunity to own a retail shop in one of Surrey's most coveted commercial plazas – Payal Business Centre. This prime property, spanning 1248 square feet, boasts a strategic location with high exposure, ensuring maximum visibility for your business. Situated in the heart of Surrey, this commercial space benefits from significant foot traffic, making it an ideal spot for retail ventures.

What sets this property apart is its exclusivity within the Payal Business Centre – a sought-after hub for diverse businesses. Retail spaces in this plaza are rarely available, making this a unique chance for entrepreneurs and investors. Whether you're looking to establish and grow your business or seeking a lucrative investment opportunity, this property caters to both aspirations.

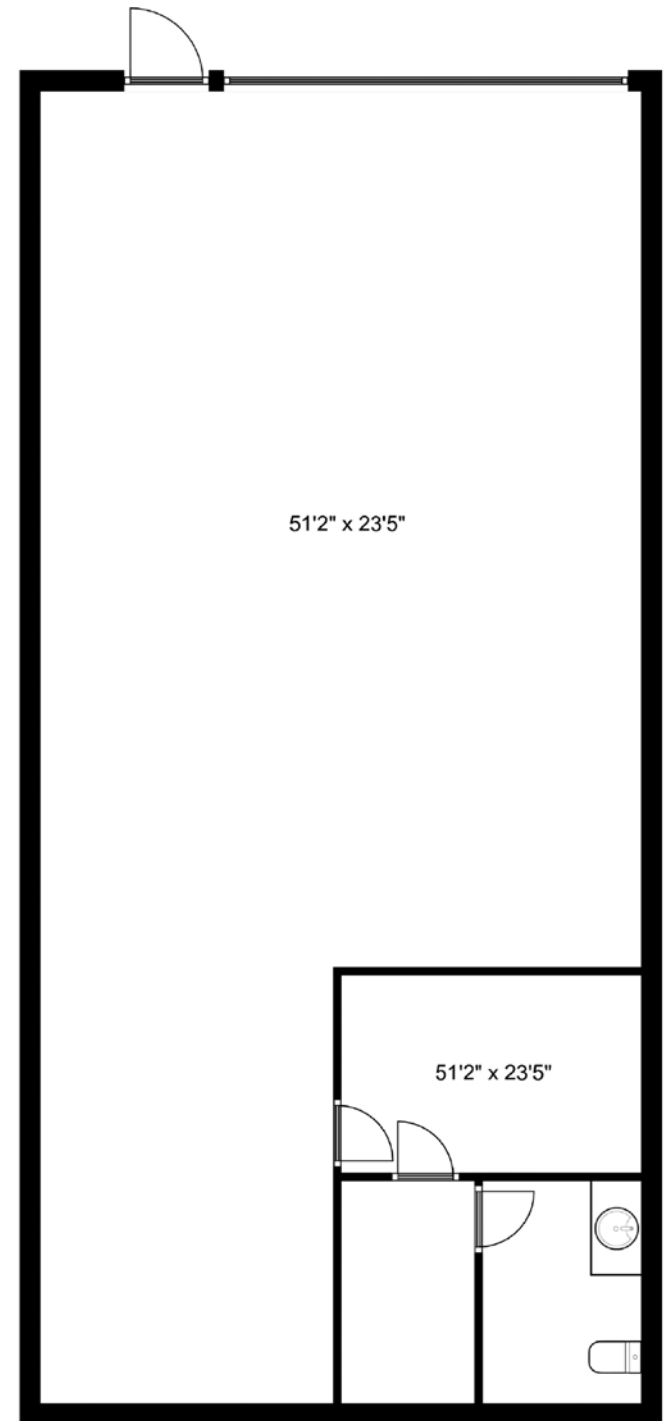
Size ± 1,248 SQFT

PID 026-087-821

Legal Description

STRATA LOT 6, PLAN BCS1022, SECTION 29, TOWNSHIP 2, NEW WESTMINSTER LAND DISTRICT, TOGETHER WITH AN INTEREST IN THE COMMON PROPERTY IN PROPORTION TO THE UNIT ENTITLEMENT OF THE STRATA LOT AS SHOWN ON FORM 1 OR V, AS APPROPRIATE

Price \$1,899,000



Disclaimer: Measurements are approximate and shall be verified by the Tenant if deemed important.



LOCATION

Located in one of the busiest commercial plaza's in the heart of Surrey.

FOR MORE INFORMATION CONTACT

AMAN KUNDI

PERSONAL REAL ESTATE CORPORATION
aman.kundi@williamwright.ca
604.428.5255