

#102-103 - 10334 152A STREET, SURREY
GROUND FLOOR OFFICE CENTRALLY LOCATED IN GUILDFORD

**FOR
LEASE**



WILLIAM | WRIGHT

Commercial Real Estate Services

STEPHEN GAMMER, CCIM
PERSONAL REAL ESTATE CORPORATION
stephen.gammer@williamwright.ca
604.546.5555

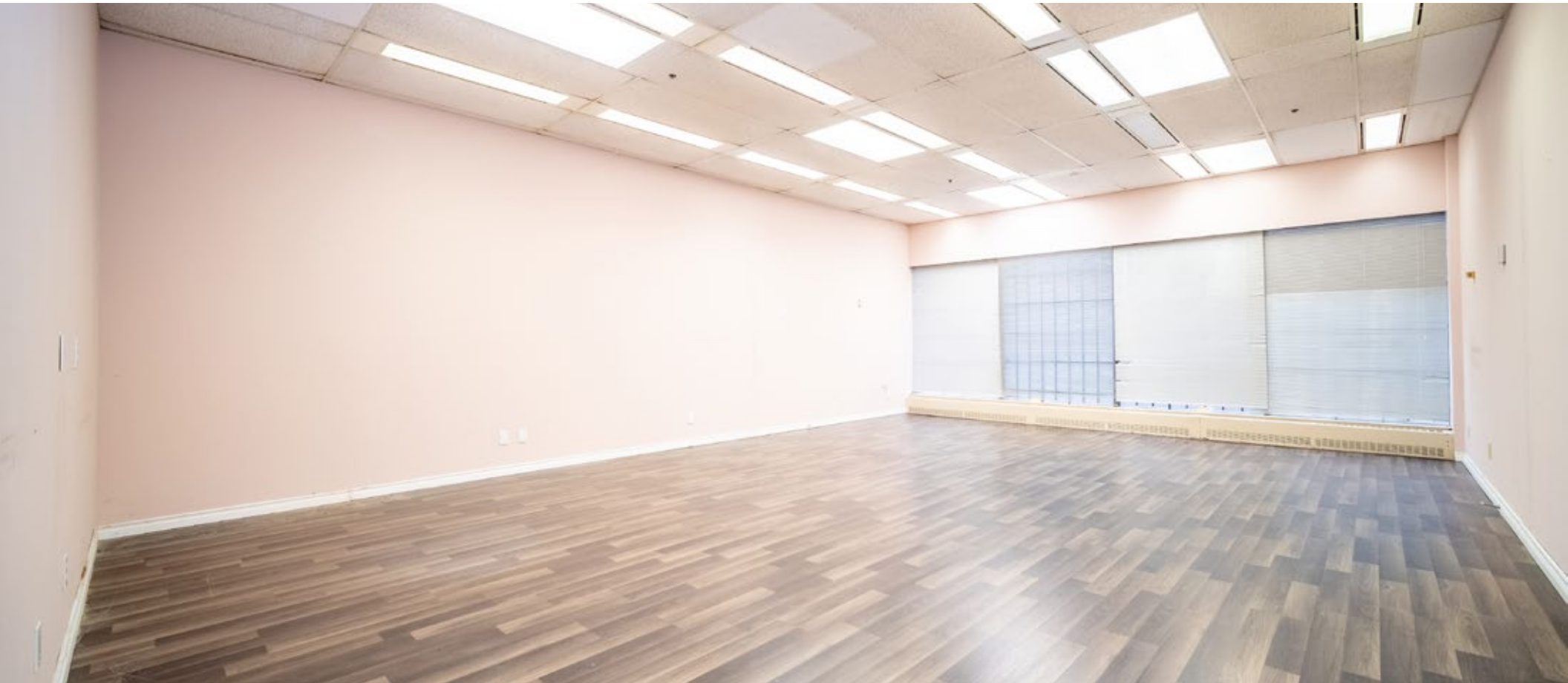




FOR LEASE **OFFICE SPACE IN GUILDFORD**

Spacious ground floor offices in Guildford's commercial hub, featuring well-lit rooms ideal for meetings, brainstorming sessions, and individual work, the offices afford ample natural light, to foster productivity and collaboration in a professional environment. Currently demised into two units, so it can be leased individually or combined.

- Ground Floor Office
- Centrally located in Guildford
- Walking distance to transit hub
- Kitchenette



SALIENT FACTS

SIZE

+/- 1,709 SQFT

PARKING

1 Stall

ZONING

CD (LUC 324)

BASIC RENT

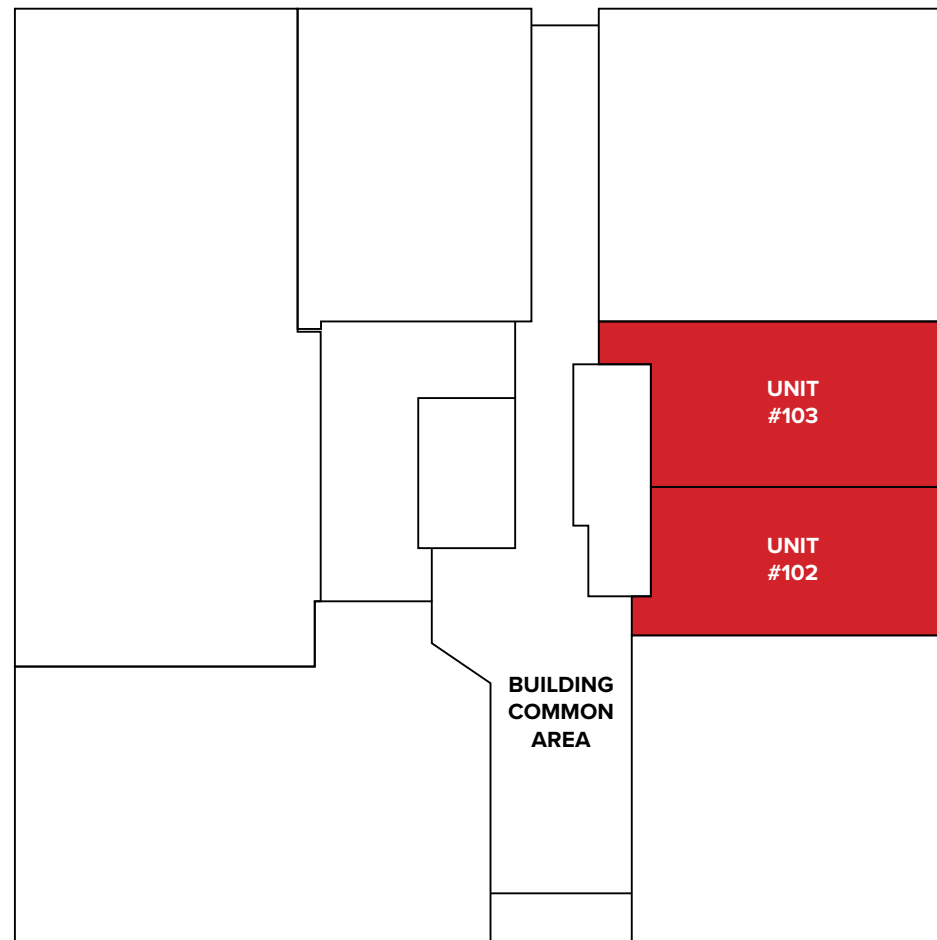
\$27.00/FT

ADDITIONAL RENT

\$13.79/FT

MONTHLY RENT

\$5,809 + GST





WALK SCORE
88



LOCATION

Guildford is comprised of mature urban neighbourhoods that grew up around the Guildford Town Centre shopping mall as well as the newer Fraser Heights subdivision which slopes down toward the Fraser River. There are great views of the Port Mann Bridge and Fraser River along the northern edge of the community. Business owners and residents in Guildford also enjoy having access to the highway and to Surrey City Centre.

FOR MORE INFORMATION CONTACT

STEPHEN GAMMER, CCIM

PERSONAL REAL ESTATE CORPORATION

stephen.gammer@williamwright.ca

604.546.5555