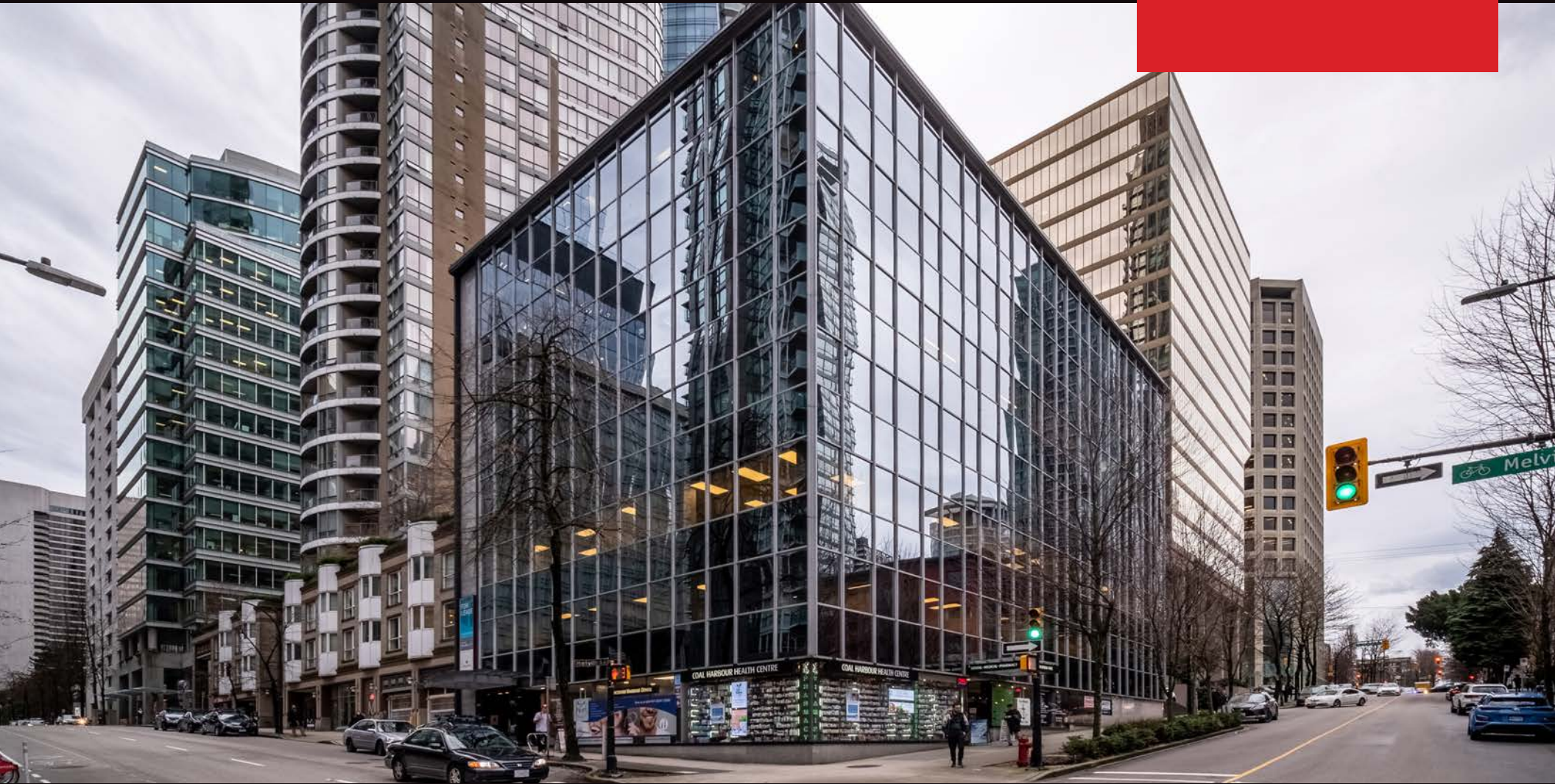


220-1190 MELVILLE STREET, VANCOUVER
MOVE IN READY OFFICE UNIT WITH 3 PRIVATE OFFICES

**FOR
SUBLEASE**

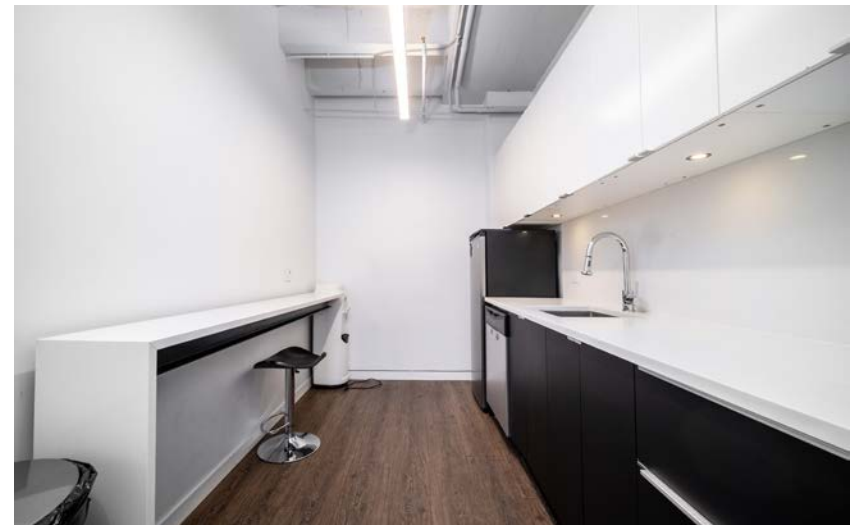


WILLIAM | WRIGHT

Commercial Real Estate Services

DAVID HEMMINGS
davi@williamwright.ca
604.428.5255

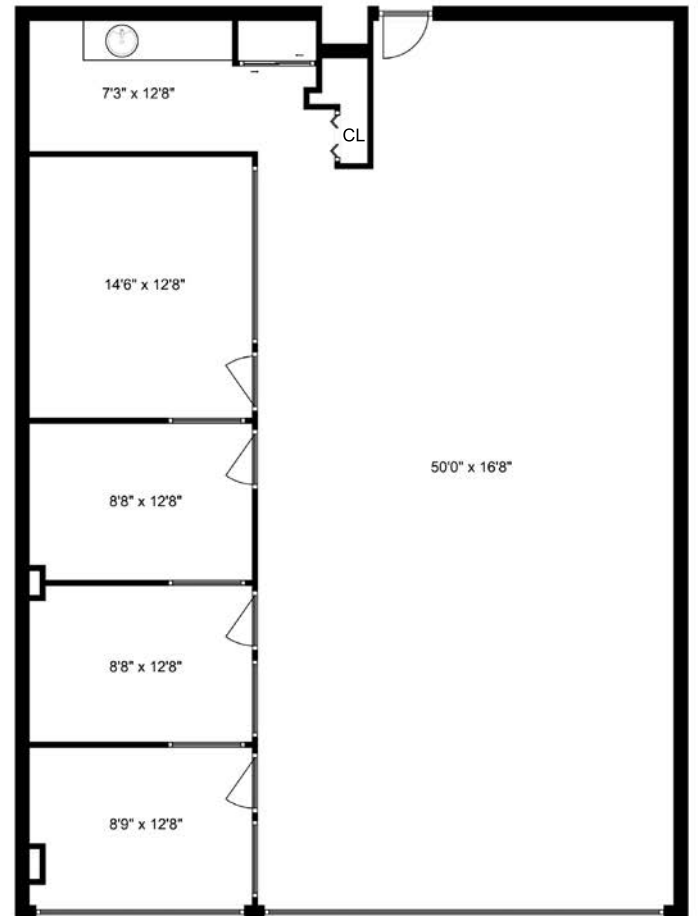




OVERVIEW

Recently renovated building features a modern front entrance and lobby, two elevators, air-conditioning, and wheelchair access. Retail tenants include a drop-in medical clinic, dental office and pharmacy. The unit is move in ready and features a large open office area, 3 private offices, kitchenette with refrigerator, microwave and dishwasher.

Size	± 2,215 SQFT
Zoning	DD
Basic Rent	\$25.00/FT
Additional Rent	\$21.00/FT
Headlease Expiry	November 30th, 2027



Disclaimer: Measurements are approximate and shall be verified by the Tenant if deemed important.



LOCATION

Ideally situated on the corner of Melville and Bute Street and two blocks from Robson Street, the Burrard SkyTrain station and Bentall Centre.



FOR MORE INFORMATION CONTACT

DAVID HEMMINGS
davi@williamwright.ca
604.428.5255