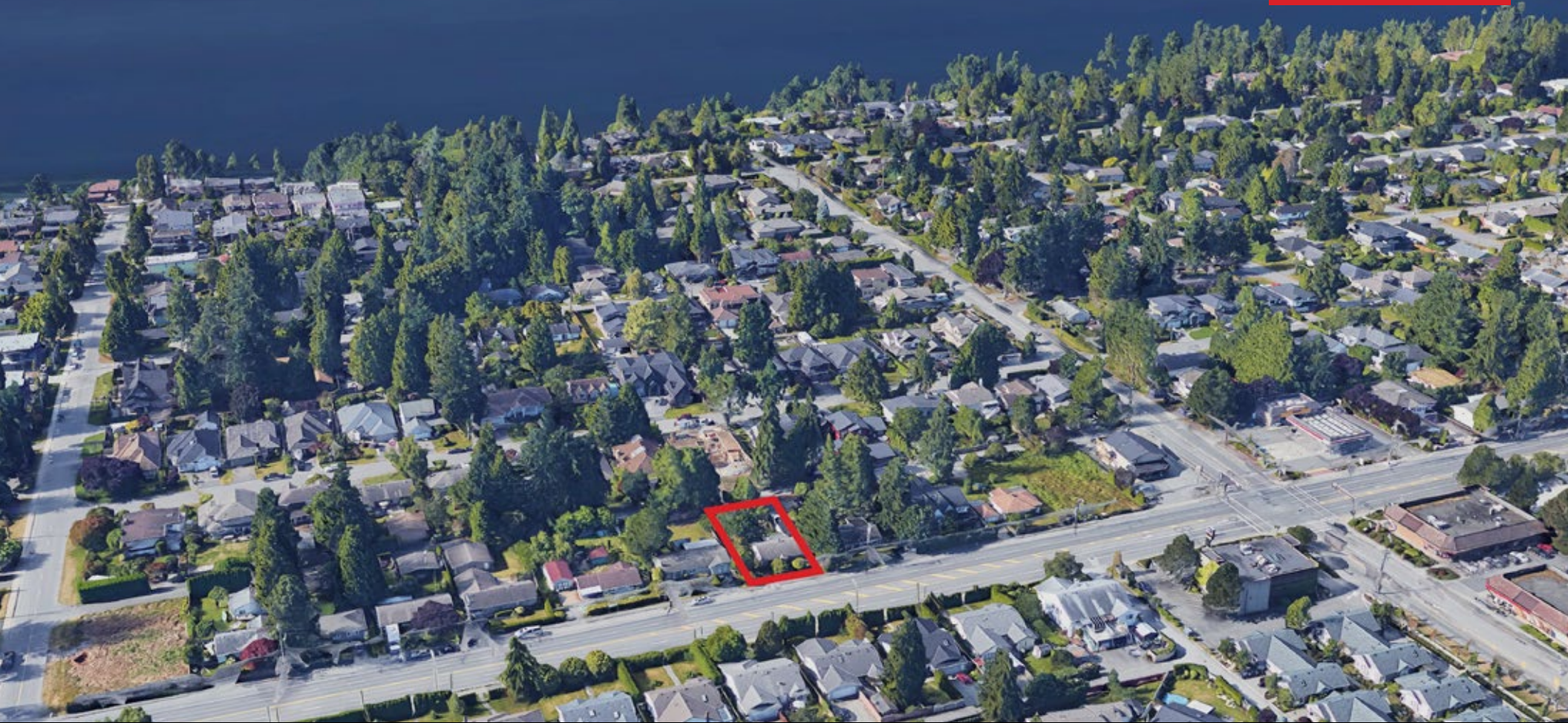


14068 NORTH BLUFF ROAD, WHITE ROCK
REDEVELOPMENT POTENTIAL ON ± 9,520 SQFT LOT

**FOR
SALE**



WILLIAM | WRIGHT

KARMAN KANG
karman.kang@williamwright.ca
604.546.5555





Visual renderings only*



The Opportunity

Exciting opportunity for investors and builders! Seize the chance to develop a premium 3-plex, 4-plex or 6-plex as per new BC legislation, on a generous 9,520 sq ft plot in the heart of White Rock. With plans poised for city approval, envision creating three expansive units of 2,900 sq ft each, complete with individual access and standalone garages. Located moments away from the scenic White Rock Beach and Pier, this location promises a blend of luxury living and appeal for both permanent residents and holiday visitors. This is a rare find in a sought-after area. Reach out for more details on this extraordinary investment prospect. Property is currently tenanted.

*These are only drawings showing the potential for property but no approvals have been issued by the City of White Rock. The Vendor and William Wright Commercial do not make warranties, repercussions nor guarantee the information in this brochure is accurate and the buyer must rely on their own due diligence when making the purchase.

Salient Facts



SIZE

± 9,520 SQFT



PARKING

Driveway + Garage



ZONING

RS1



PROPERTY TAXES

\$5,990.43



PID

000-766-844



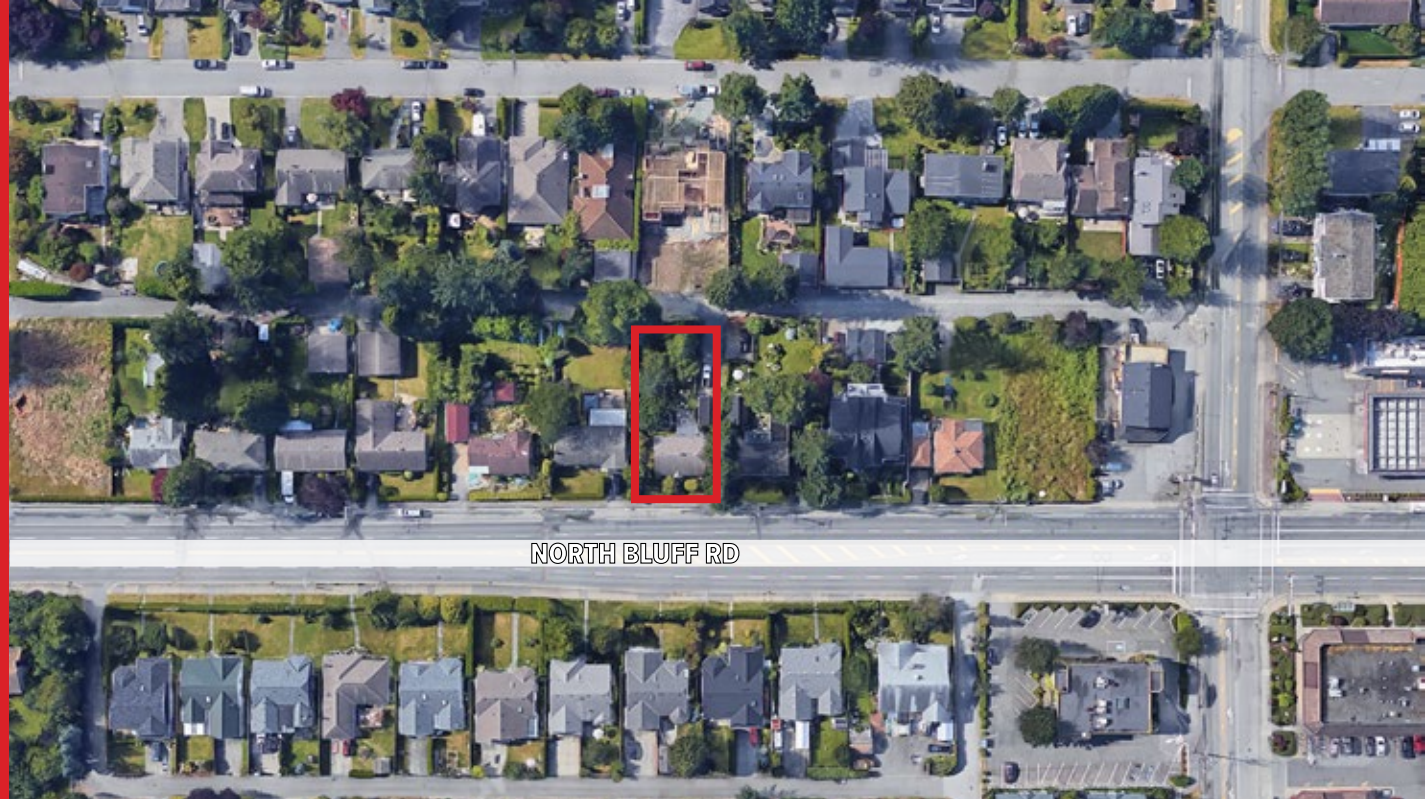
LEGAL DESCRIPTION

LOT 6, PLAN NWP8281, PART NE1/4,
SECTION 9, TOWNSHIP 1, NEW
WESTMINSTER LAND DISTRICT,
EXCEPT PLAN 30172



PRICE

\$2,499,999.99



Minutes Away From White Rock Beach

Living in White Rock means embracing coastal living. With only a 10-minute drive, you're at White Rock Beach and Crescent Beach, both great areas to enjoy those sunny days and spend time relaxing. The area doesn't get much snow and it's the perfect place to bring the family on the weekends.

For More Information Contact

KARMAN KANG
karman.kang@williamwright.ca
604.546.5555

DRIVING DISTANCES

KING GEORGE BLVD	7 MIN DRIVE
THE SHOPS AT MORGAN CROSSING	10 MIN DRIVE
CENTRAL SURREY	32 MIN DRIVE
YVR AIRPORT	36 MIN DRIVE

