

7061 MERRITT AVENUE, BURNABY
998 SQFT SECOND-FLOOR OFFICE SPACE

**FOR
LEASE**



WILLIAM | WRIGHT

NATHAN ARMOUR
PERSONAL REAL ESTATE CORPORATION
nathan@williamwright.ca
604.545.0636

LIAM MARCH
liam.march@williamwright.ca
604.545.0636



7061 MERRITT AVENUE



Opportunity to lease a second-floor office space spanning 998 sq. ft. located between Kingsway and Beresford Street in Burnaby. This centrally located office offers convenient access, merely a 5-minute drive to Metrotown Mall and close proximity to various retailers, surrounding residential neighbourhoods, and the Royal Oak SkyTrain Station.

PROPERTY HIGHLIGHTS

Central location with easy access to transit and many amenities



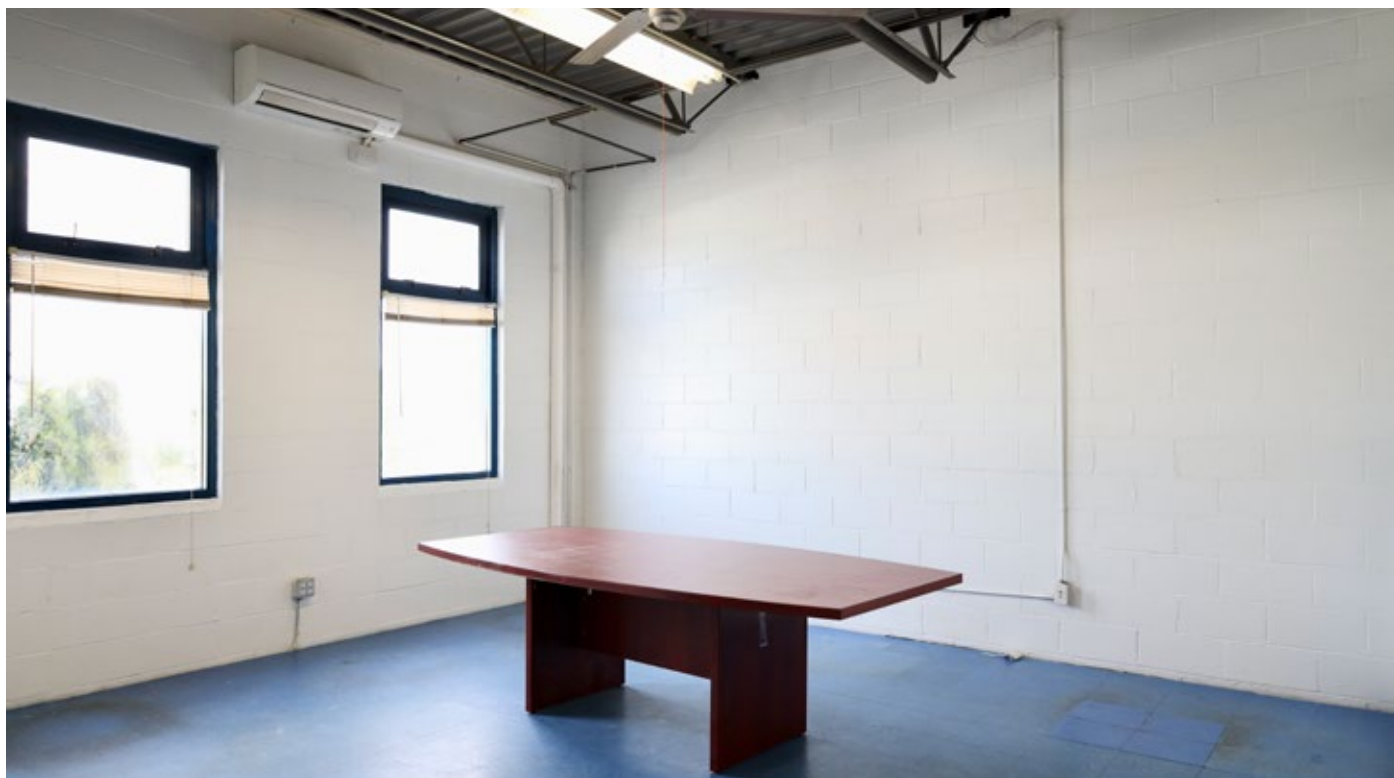
On-site parking available



Combination of offices and open area



Natural Light



7061 MERRITT AVENUE BURNABY



SIZE
+/- 998 SQFT



PARKING
2 stalls



ZONING
M4



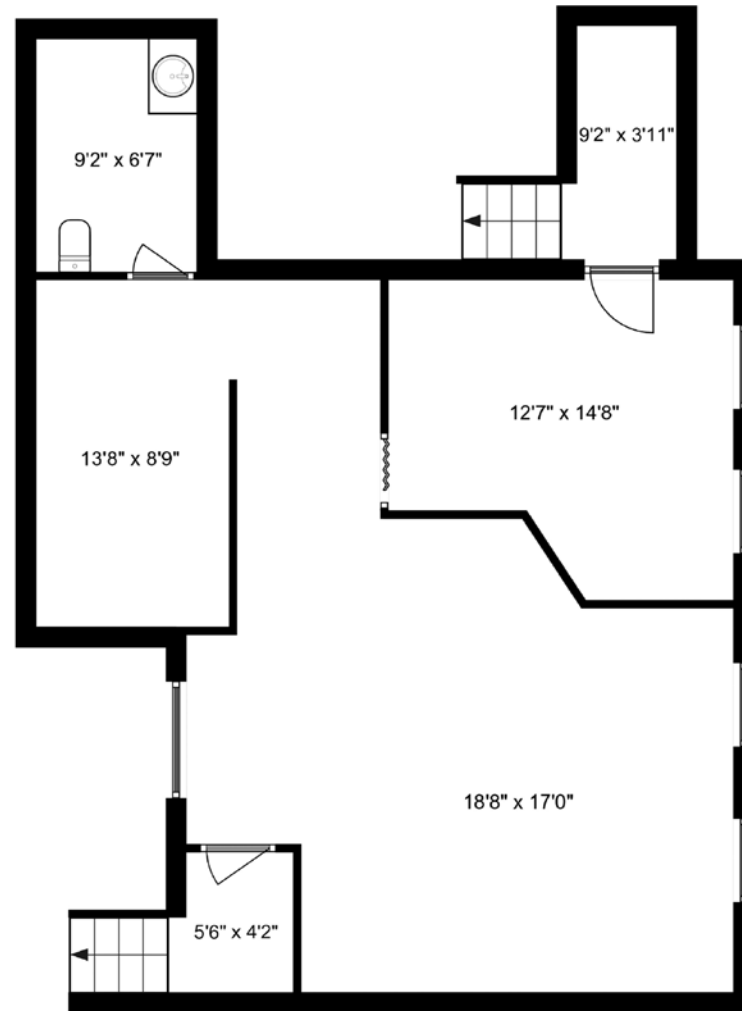
BASIC RENT
\$18.00/FT



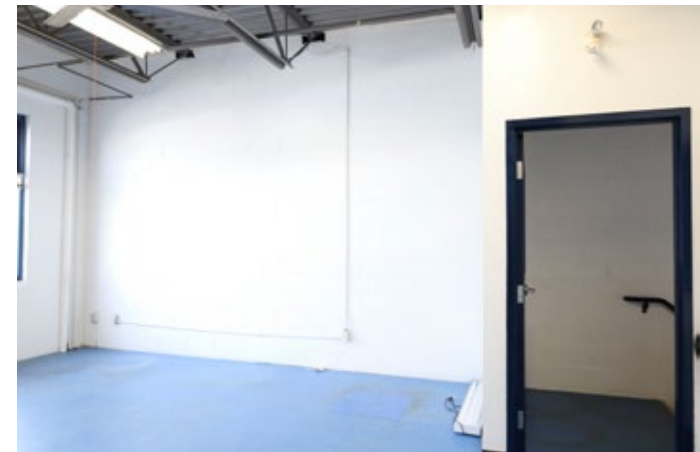
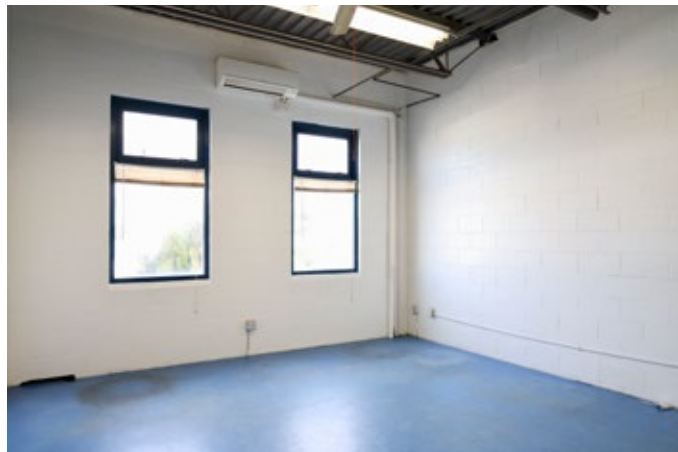
ADDITIONAL RENT
\$8.54/FT



MONTHLY RENT
\$2,207.24 + GST



Disclaimer: Measurements and floorplan are approximate. Tenant or Tenant's agent to verify if deemed important.



LOCATION

Kingsway and Beresford Street is a bustling intersection located in Burnaby. Situated in the Metrotown area, this location is known for its commercial and residential mix. It offers convenient access to amenities such as shopping centers, restaurants, cafes, and public transportation hubs like the Royal Oak SkyTrain Station. The area is characterized by its vibrant urban atmosphere and serves as a key hub for both business and leisure activities within Burnaby.



FOR MORE INFORMATION CONTACT

NATHAN ARMOUR
PERSONAL REAL ESTATE CORPORATION
nathan@williamwright.ca
604.545.0636

LIAM MARCH
liam.march@williamwright.ca
604.545.0636



METROTOWN AT METROPOLIS

ROYAL OAK SKYTRAIN STATION

EXPO SKYTRAIN LINE

BERESFORD ST

SUBJECT PROPERTY

MERRITT AVE

SUBJECT PROPERTY DISTANCES

| | |
|---------------------------|---------------------|
| KINGSWAY | 2 MIN DRIVE |
| ROYAL OAK SKYTRAIN | 3 MIN DRIVE |
| YVR AIRPORT | 25 MIN DRIVE |
| DOWNTOWN VANCOUVER | 32 MIN DRIVE |