

# A, B - 780 WINDSOR AVENUE, KAMLOOPS

RETAIL SPACE IN CENTRAL LOCATION, AMPLE PARKING, AND SIGNAGE OPPORTUNITIES

FOR  
LEASE



WILLIAM | WRIGHT

**MARIANNE DECOTIIS**  
PERSONAL REAL ESTATE CORPORATION  
marianne@williamwright.ca  
236.425.1617





## OVERVIEW

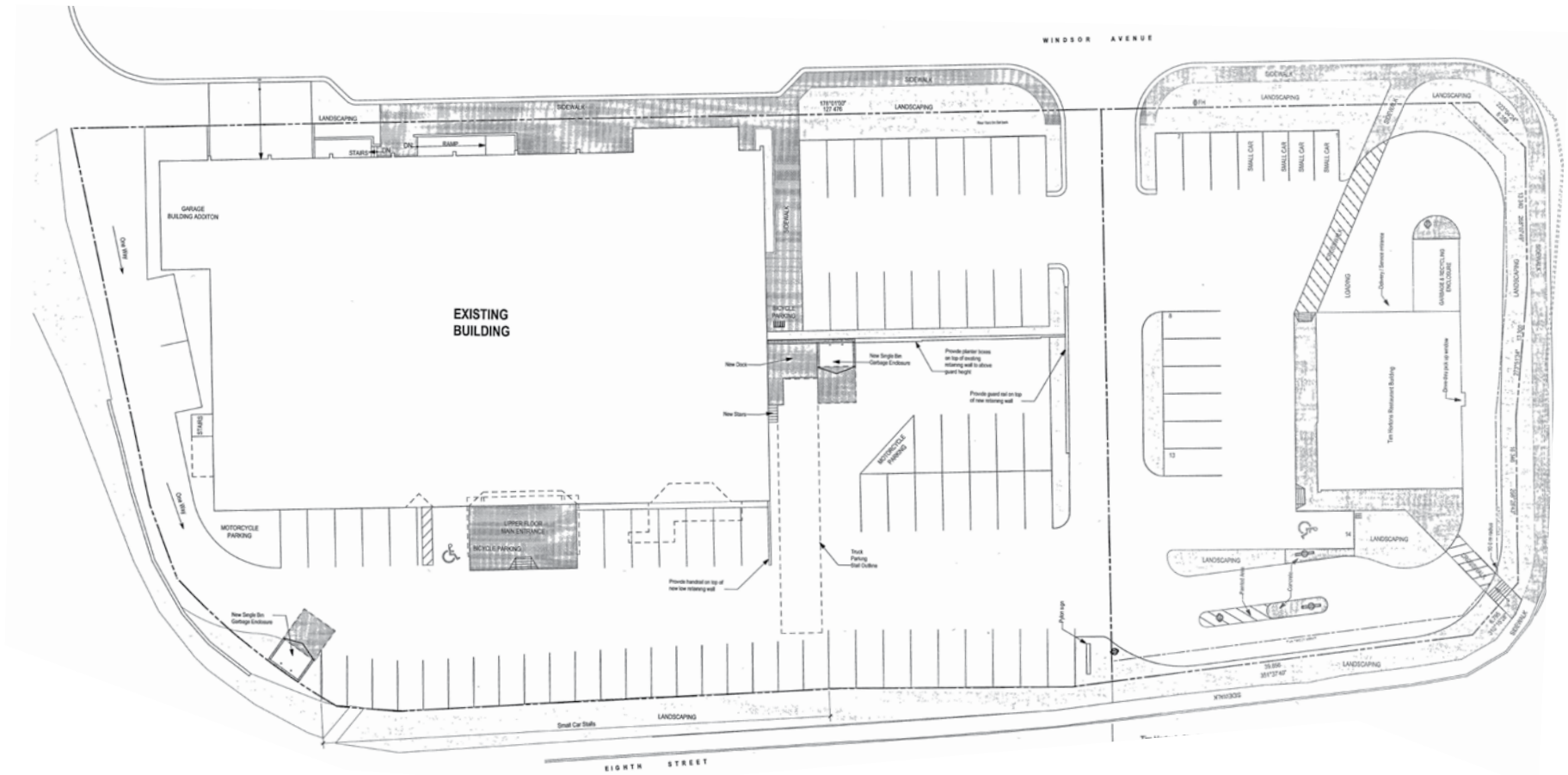
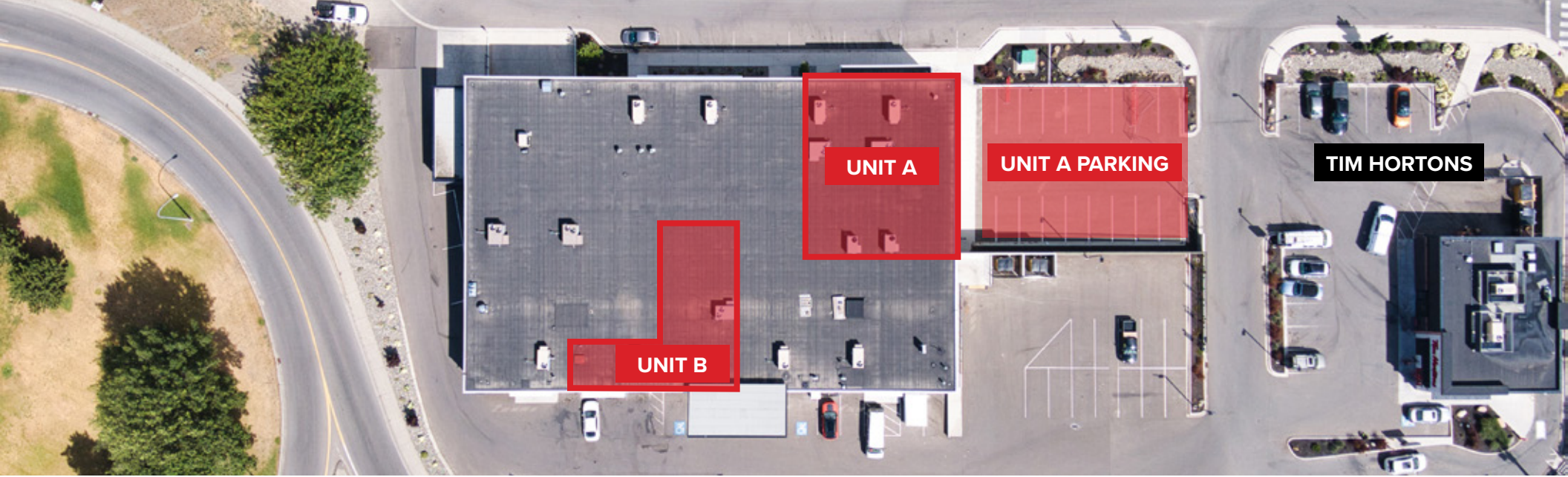
William Wright Commercial is pleased to present an amazing location at one of the busiest intersections in Kamloops, offering high visibility onto 8th Street with over 30,000 vehicles per day driving by. This brand new strip center is anchored by Tim Hortons and Angry Otter Liquor, and has some new exciting tenants coming in. This location is convenient for major areas of Kamloops such as North Shore, Brocklehurst, Batchelor Heights, and Westsyde, as well as Rayleigh and Heffley Creek. The units are approximately 2,346 SQFT and 8,300 SQFT and are ready for your design ideas. Ample parking and signage opportunities make this building a wonderful place for your business.

### UNIT A

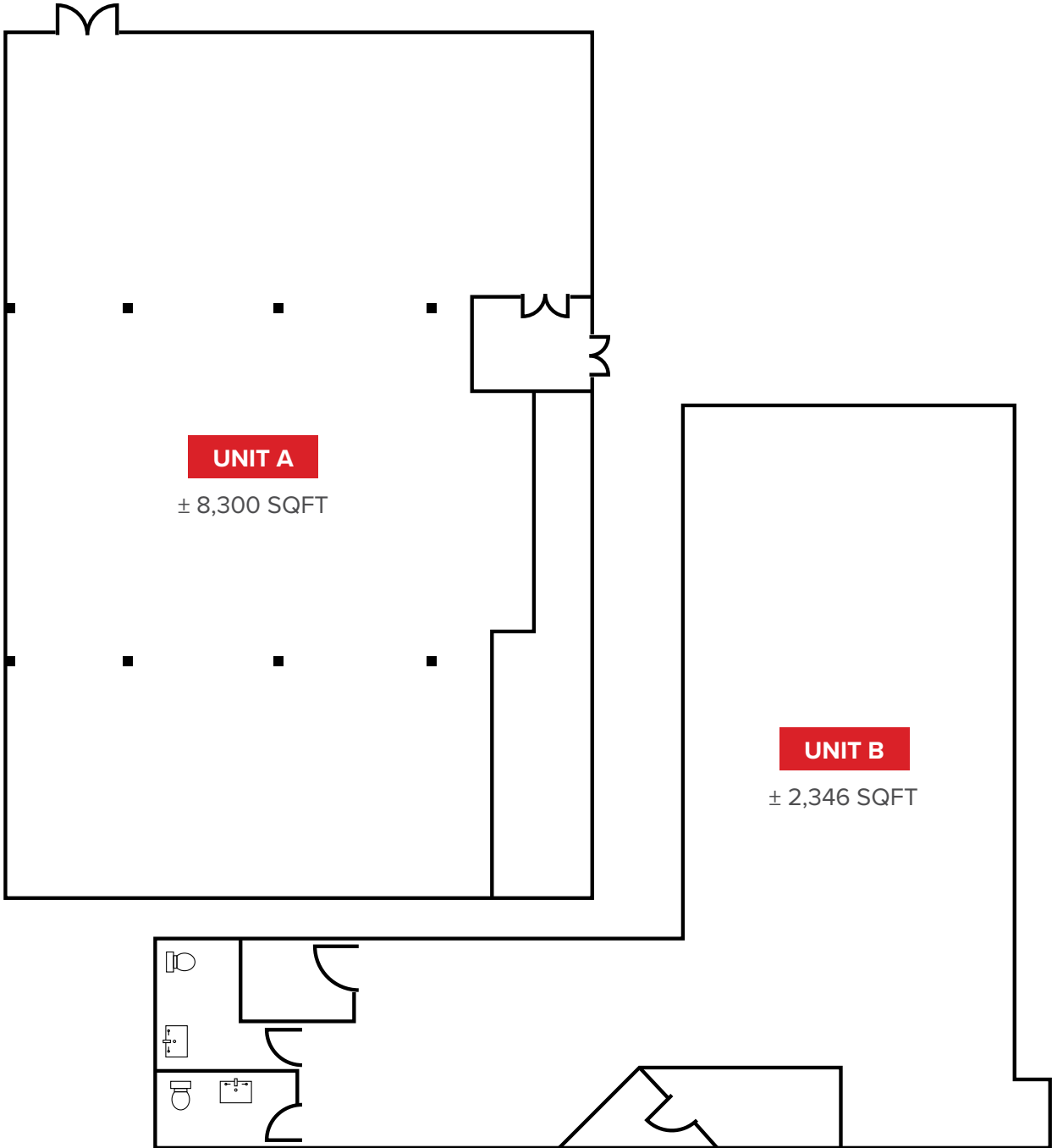


### UNIT B





# FLOORPLANS

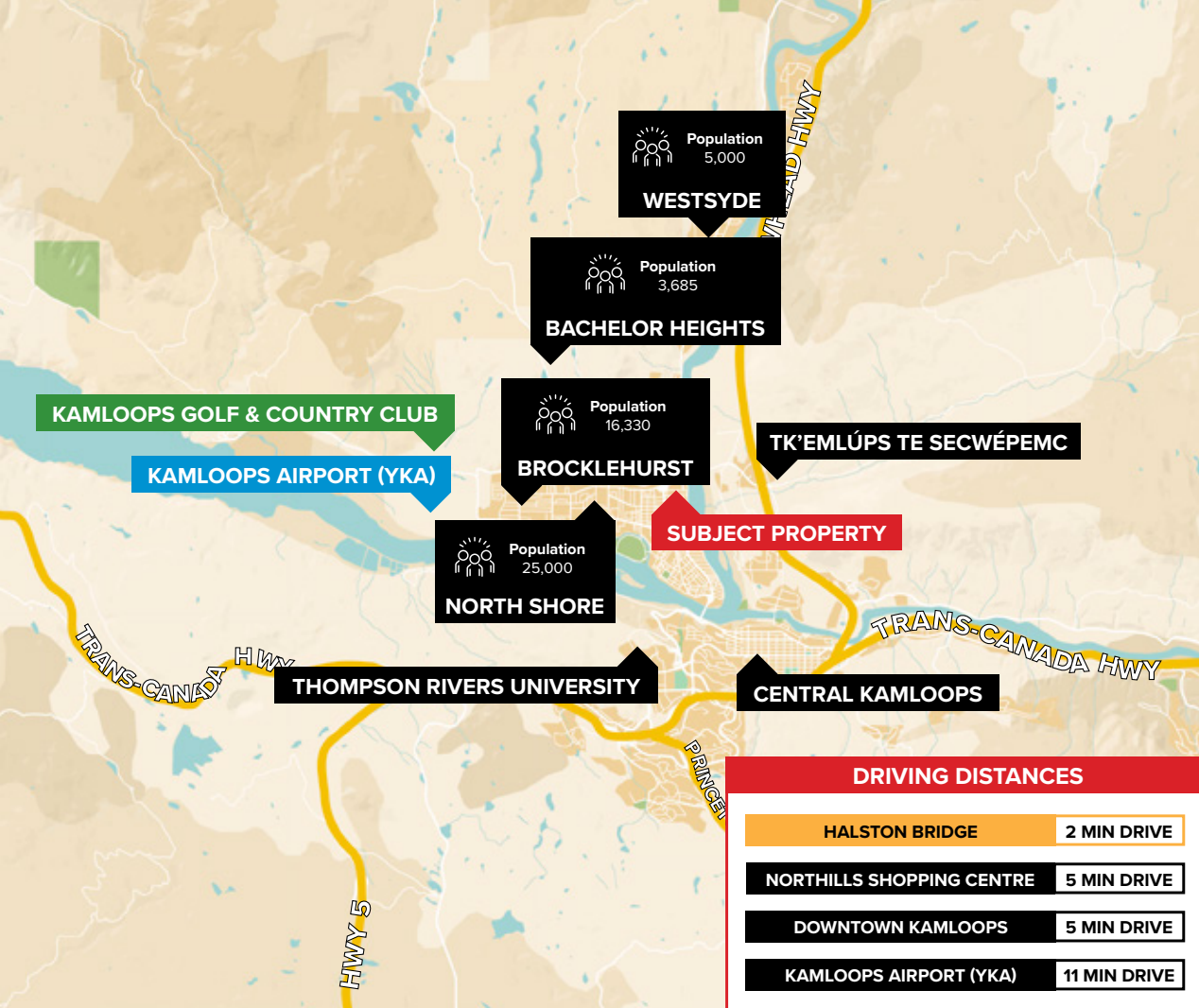




**MULTIPLE PARKING STALLS**



<b>Size</b>	Unit A: ± 8,300 SQFT Unit B: ± 2,346 SQFT
<b>Zoning</b>	C6
<b>Basic Rent</b>	Contact Listing Agent
<b>Additional Rent</b>	\$4.00/SF



## LOCATION

North Shore of Kamloops is home to 25,000 residents, Westsyde is home to 5,000 residents, Brocklehurst is home 16,330 residents, and Batchelor Heights is home to 3,685 residents. With over 50,000 people, which is half of Kamloops population, this location is convenient and has high visibility for vehicle traffic for everyone living in the area.

## CONTACT LISTING AGENT

**MARIANNE DECOTIIS**  
PERSONAL REAL ESTATE CORPORATION  
marianne@williamwright.ca  
236.425.1617