

100 - 948 HOWE STREET, VANCOUVER
HIGH EXPOSURE IN THE HEART OF DOWNTOWN

**FOR
LEASE**



WILLIAM | WRIGHT

HEATHER CONNOR
heather.connor@williamwright.ca
604.428.5255

MATTHEW HO
PERSONAL REAL ESTATE CORPORATION
matthew.ho@williamwright.ca
604.428.5255

STEVEN LAM
PERSONAL REAL ESTATE CORPORATION
steven@williamwright.ca
604.428.5255





High Exposure in the Heart of
Downtown Vancouver



Warm Shell Retail with Flexible Open
Layout



Large Windows with Great Natural
Lighting



Well-Maintained & Concrete
Construction



100-948 HOWE STREET

This 2,367 SF ground-floor retail space offers large storefront windows, providing excellent visibility and natural light. Featuring two washrooms and flexible DD zoning, the unit is a versatile warm shell, ready for a variety of commercial uses. Well-maintained and spacious, it's an ideal space for businesses looking to establish a strong presence in downtown Vancouver.

**Warm Shell Retail Space
For Lease**

SALIENT FACTS

SIZE

+/- 2,367 SQFT

PARKING

1 Designated Stall

ZONING

DD

BASIC RENT

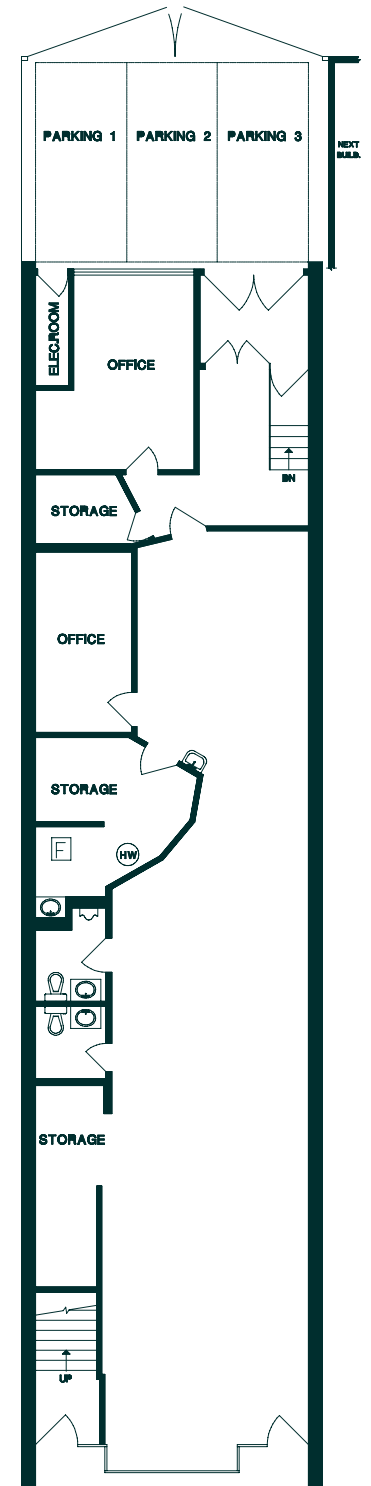
\$45.00/FT

ADDITIONAL RENT

\$21.45/FT (Est.)

MONTHLY RENT

\$13,107.26 + GST



Disclaimer: Measurements are approximate and shall be verified by the Tenant if deemed important.



LOCATION

Located in the heart of downtown Vancouver, this property is surrounded by a variety of restaurants, shops, and amenities. It's just a short walk to Robson Square and Pacific Centre Mall. Nearby attractions include the Provincial Law Courts, Robson Street shopping district, Vancouver Art Gallery, and BC Place Stadium, all within walking distance.

TRANSIT

The subject property offers excellent access to public transit, with Vancouver City Centre and Granville SkyTrain stations within walking distance, providing easy access to both the Canada Line and Expo Line. The area is also pedestrian and cyclist friendly, with bike lanes and public parking options nearby.

CONTACT LISTING AGENTS

HEATHER CONNOR

heather.connor@williamwright.ca
604.428.5255

MATTHEW HO*

matthew.ho@williamwright.ca
604.428.5255

STEVEN LAM*

steven@williamwright.ca
604.428.5255

*PERSONAL REAL ESTATE CORPORATION